

## TOR1AIP1 RABBIT PAB

**Cat.#:** S219134

**Product Name:** Anti-TOR1AIP1 Rabbit Polyclonal Antibody

**Synonyms:** LAPI; LAPIB; LGMD2Y

**UNIPROT ID:** Q5JTV8 (Gene Accession - BC023247 )

**Background:** This gene encodes a type 2 integral membrane protein that binds A- and B-type lamins. The encoded protein localizes to the inner nuclear membrane and may be involved in maintaining the attachment of the nuclear membrane to the nuclear lamina during cell division. Alternate splicing results in multiple transcript variants.

**Immunogen:** Fusion protein of human TOR1AIP1

**Applications:** ELISA, IHC

**Recommended Dilutions:** IHC: 50-300; ELISA: 5000-10000

**Host Species:** Rabbit

**Clonality:** Rabbit Polyclonal

**Isotype:** Immunogen-specific rabbit IgG

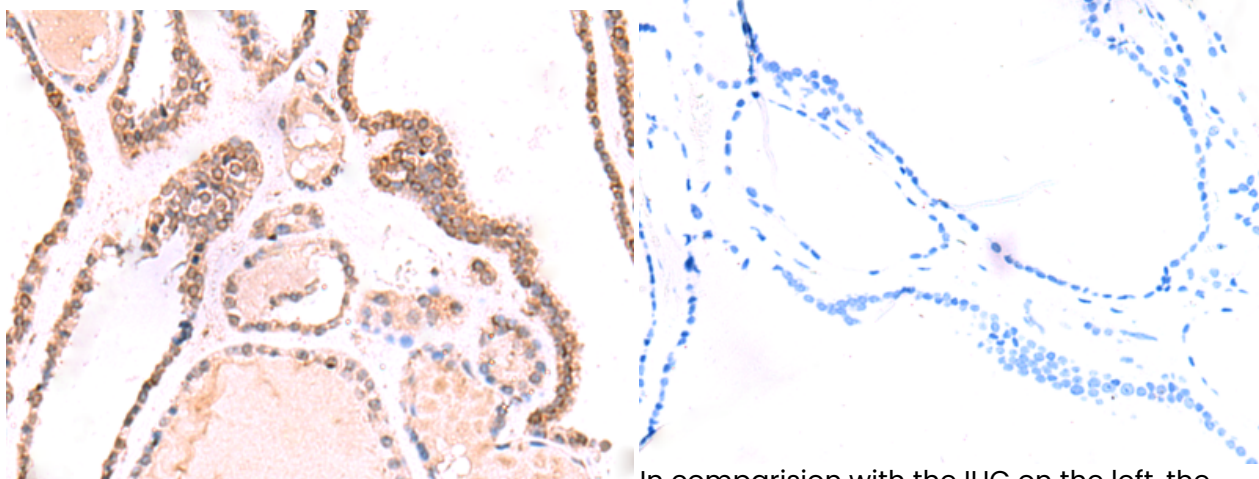
**Purification:** Antigen affinity purification

**Species Reactivity:** Human, Mouse, Rat

**Constituents:** PBS (without Mg<sup>2+</sup> and Ca<sup>2+</sup>), pH 7.4, 150 mM NaCl, 0.05% Sodium Azide and 40% glycerol

**Research Areas:** Signal Transduction

**Storage & Shipping:** Store at -20°C. Avoid repeated freezing and thawing



Immunohistochemistry analysis of paraffin embedded Human thyroid cancer tissue using 219134(TOR1AIP1 Antibody) at a dilution of 1/70(Nucleus and Cytoplasm).

In comparison with the IHC on the left, the same paraffin-embedded Human thyroid cancer tissue is first treated with the fusion protein and then with 219134(Anti-TOR1AIP1 Antibody) at dilution 1/70.