

## TOPOISOMERASE I RABBIT MAB

**Cat.#:** N263009

**Product Name:** Anti-Topoisomerase I Rabbit Monoclonal Antibody

**Synonyms:** TOP1; DNA topoisomerase 1; DNA topoisomerase I

**UNIPROT ID:** P11387

**Background:** Releases the supercoiling and torsional tension of DNA introduced during the DNA replication and transcription by transiently cleaving and rejoining one strand of the DNA duplex. Introduces a single-strand break via transesterification at a target site in duplex DNA. The scissile phosphodiester is attacked by the catalytic tyrosine of the enzyme, resulting in the formation of a DNA-(3'-phosphotyrosyl)-enzyme intermediate and the expulsion of a 5'-OH DNA strand.

**Immunogen:** A synthetic peptide of human Topoisomerase I

**Applications:** WB,IHC-F,IHC-P,ICC/IF

**Recommended Dilutions:** WB: 1/500-1/1000 IHC: 1/50-1/100 IF: 1/50-1/200

**Host Species:** Rabbit

**Clonality:** Rabbit Monoclonal

**Clone ID:** R02-2H9

**MW:** Calculated MW: 91 kDa; Observed MW: 91 kDa

**Isotype:** IgG

**Purification:** Affinity Purified

**Species Reactivity:** Human,Mouse,Rat

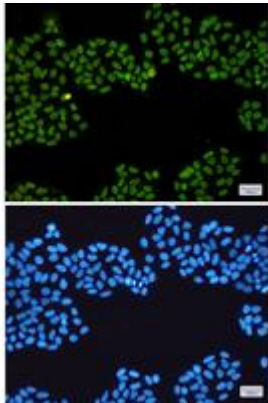
**Conjugation:** Unconjugated

**Modification:** Unmodified

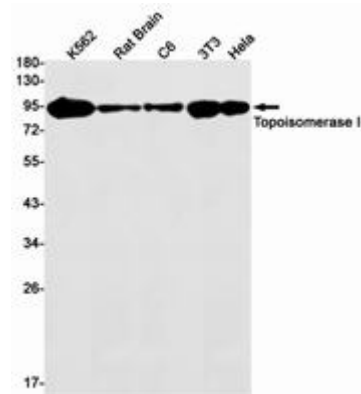
**Constituents:** PBS (without Mg<sup>2+</sup> and Ca<sup>2+</sup>), pH 7.3 containing 50% glycerol, 0.5% BSA and 0.02% sodium azide

**Research Areas:** Epigenetics and Nuclear Signaling

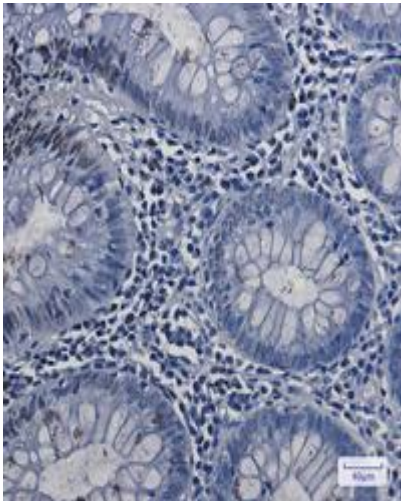
**Storage & Shipping:** Store at -20°C. Avoid repeated freezing and thawing



Immunocytochemistry analysis of Topoisomerase I (green) in HeLa using Topoisomerase I antibody, and DAPI (blue)



Western blot analysis of Topoisomerase I in K562, rat Brain, C6, 3T3, HeLa lysates using Topoisomerase I antibody.



Immunohistochemistry analysis of paraffin-embedded Human colon cancer using Topoisomerase I antibody. High-pressure and temperature Sodium Citrate pH 6.0 was used for antigen retrieval.