

## TOP1MT RABBIT PAB

**Cat.#:** S220009

**Product Name:** Anti-TOP1MT Rabbit Polyclonal Antibody

**Synonyms:**

**UNIPROT ID:** Q969P6 (Gene Accession - NP\_001245375 )

**Background:** This gene encodes a mitochondrial DNA topoisomerase that plays a role in the modification of DNA topology. The encoded protein is a type IB topoisomerase and catalyzes the transient breaking and rejoining of DNA to relieve tension and DNA supercoiling generated in the mitochondrial genome during replication and transcription. Alternatively spliced transcript variants encoding multiple isoforms have been observed for this gene.

**Immunogen:** Synthetic peptide of human TOP1MT

**Applications:** ELISA, IHC

**Recommended Dilutions:** IHC: 20-May; ELISA: 1000-2000

**Host Species:** Rabbit

**Clonality:** Rabbit Polyclonal

**Isotype:** Immunogen-specific rabbit IgG

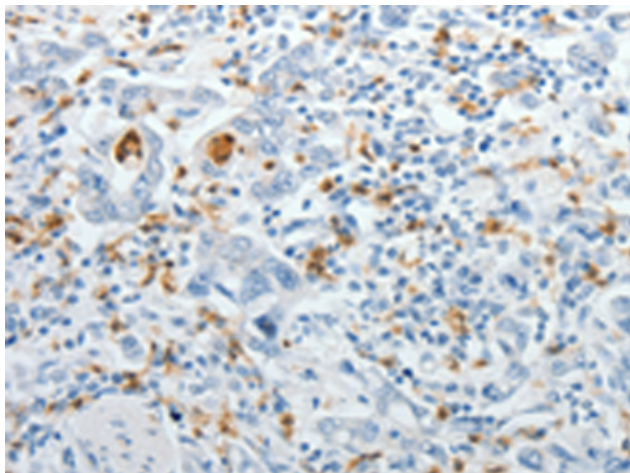
**Purification:** Antigen affinity purification

**Species Reactivity:** Human

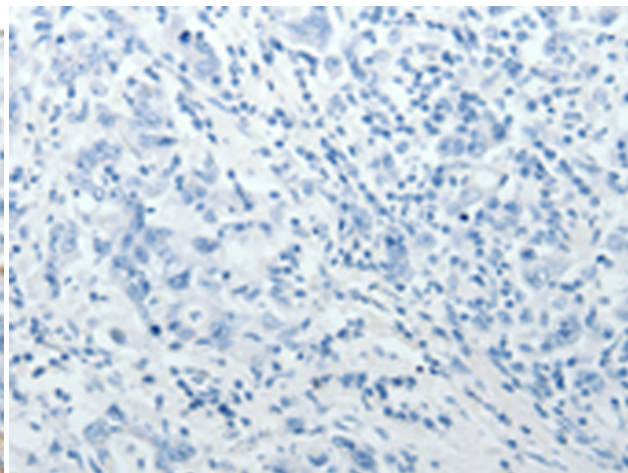
**Constituents:** PBS (without Mg<sup>2+</sup> and Ca<sup>2+</sup>), pH 7.4, 150 mM NaCl, 0.05% Sodium Azide and 40% glycerol

**Research Areas:** Epigenetics and Nuclear Signaling

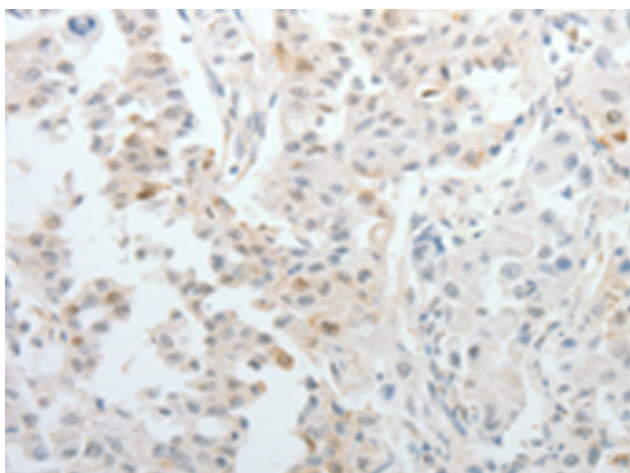
**Storage & Shipping:** Store at -20°C. Avoid repeated freezing and thawing



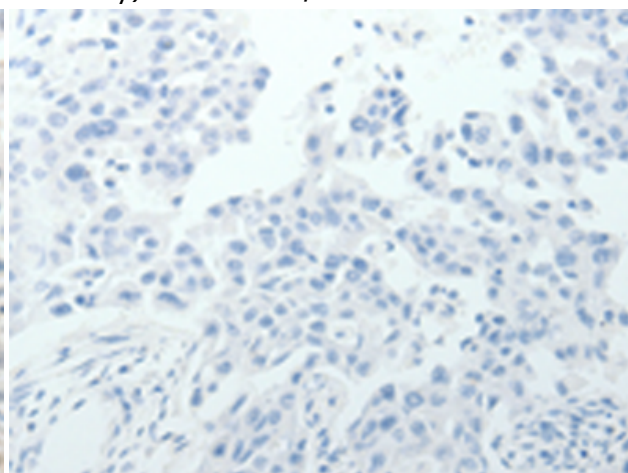
Immunohistochemistry analysis of paraffin embedded Human gastric cancer tissue using 220009 (TOP1MT Antibody) at a dilution of 1/10 (Cytoplasm, Nucleus).



In comparison with the IHC on the left, the same paraffin-embedded Human gastric cancer tissue is first treated with the synthetic peptide and then with 220009 (Anti-TOP1MT Antibody) at dilution 1/10.



The image on the left is immunohistochemistry of paraffin-embedded Human lung cancer tissue using 220009 (Anti-TOP1MT Antibody) at a dilution of 1/10.



In comparison with the IHC on the left, the same paraffin-embedded Human lung cancer tissue is first treated with synthetic peptide and then with D260774 (Anti-TOP1MT Antibody) at dilution 1/10.