

TOMM20 RABBIT PAB

Cat.#: N225993

Product Name: Anti-TOMM20 Rabbit pAb

Synonyms: TOMM20; KIAA0016; Mitochondrial import receptor subunit TOM20 homolog; Mitochondrial 20 kDa outer membrane protein; Outer mitochondrial membrane receptor Tom20

UNIPROT ID: Q15388

Background: Central component of the receptor complex responsible for the recognition and translocation of cytosolically synthesized mitochondrial preproteins. Together with TOM22 functions as the transit peptide receptor at the surface of the mitochondrion outer membrane and facilitates the movement of preproteins into the TOM40 translocation pore.

Immunogen: Recombinant protein of human TOMM20

Applications: WB,IHC-F,IHC-P,ICC/IF,FC

Recommended Dilutions: WB: 1/500-1/1000 IHC: 1/50-1/100 IF: 1/50-1/200 FC: 1/50-1/100

Host Species: Rabbit

Clonality: Rabbit Polyclonal

Clone ID: -

MW: Calculated MW: 16 kDa; Observed MW: 16 kDa

Isotype: IgG

Purification: Affinity Purified

Species Reactivity: Human,Mouse

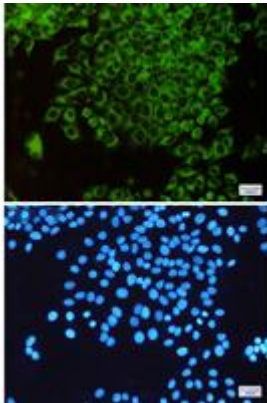
Conjugation: Unconjugated

Modification: Unmodified

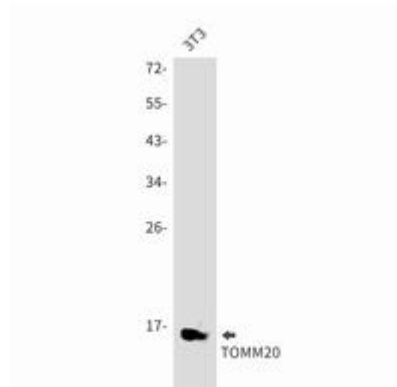
Constituents: PBS (without Mg²⁺ and Ca²⁺), pH 7.3 containing 50% glycerol, 0.5% BSA and 0.02% sodium azide

Research Areas: Signal Transduction

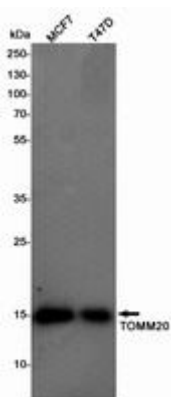
Storage & Shipping: Store at -20°C. Avoid repeated freezing and thawing



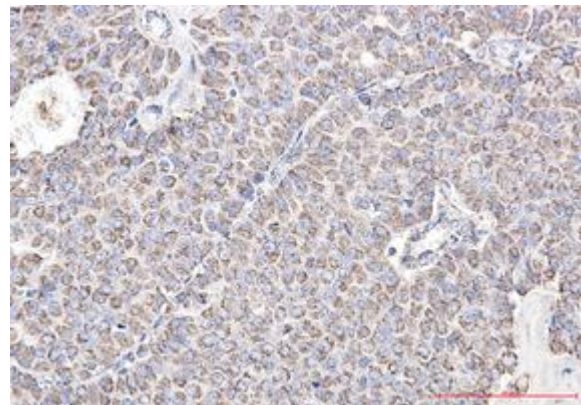
Immunocytochemistry analysis of TOMM20 (green) in Hela using TOMM20 antibody, and DAPI (blue)



Western blot analysis of TOMM20 in 3T3 lysates using TOMM20 antibody.



Western blot analysis of TOMM20 in MCF-7, T47D lysates using TOMM20 antibody.



Immunohistochemistry analysis of paraffin-embedded Human breast cancer using TOMM20 antibody. High-pressure and temperature Sodium Citrate pH 6.0 was used for antigen retrieval.