

TOE1 RABBIT PAB

Cat.#: S219492

Product Name: Anti-TOE1 Rabbit Polyclonal Antibody

Synonyms: PCH7; hCaf1z

UNIPROT ID: Q96GM8 (Gene Accession - BC009364)

Background: Inhibits cell growth rate and cell cycle. Induces CDKN1A expression as well as TGF-beta expression. Mediates the inhibitory growth effect of EGFR. Involved in the maturation of snRNAs and snRNA 3'-tail processing (PubMed:28092684).

Immunogen: Fusion protein of human TOE1

Applications: ELISA, WB, IHC

Recommended Dilutions: IHC: 100-200;WB: 500-2000;ELISA: 5000-10000

Host Species: Rabbit

Clonality: Rabbit Polyclonal

Isotype: Immunogen-specific rabbit IgG

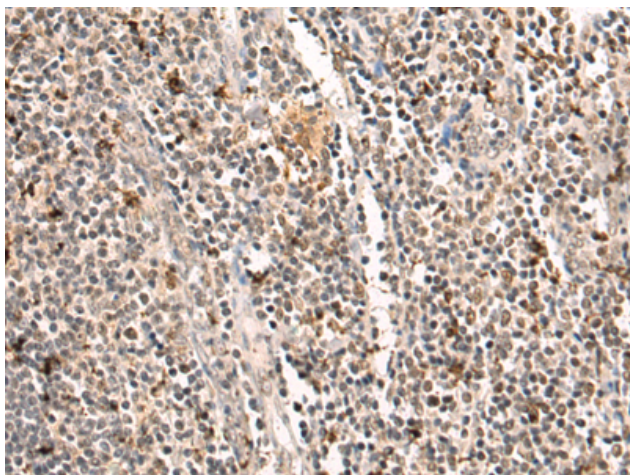
Purification: Antigen affinity purification

Species Reactivity: Human

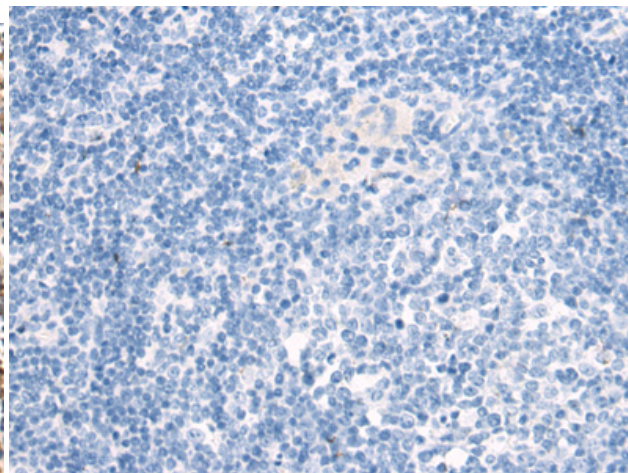
Constituents: PBS (without Mg²⁺ and Ca²⁺), pH 7.4, 150 mM NaCl, 0.05% Sodium Azide and 40% glycerol

Research Areas: Cell Biology

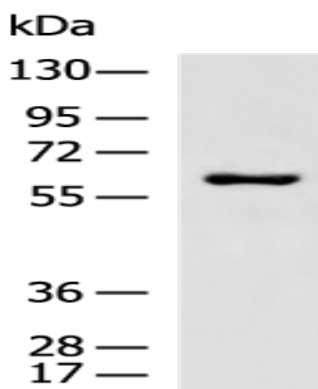
Storage & Shipping: Store at -20°C. Avoid repeated freezing and thawing



Immunohistochemistry analysis of paraffin embedded Human tonsil tissue using 219492(TOE1 Antibody) at a dilution of 1/110(Nucleus).



In comparison with the IHC on the left, the same paraffin-embedded Human tonsil tissue is first treated with the fusion protein and then with 219492(Anti-TOE1 Antibody) at dilution 1/110.



Gel: 8%SDS-PAGE, Lysate: 40 μ g;
Lane: K562 cell lysate;
Primary antibody: 219492(TOE1 Antibody) at dilution 1/800;
Secondary antibody: HRP-conjugated Goat anti rabbit IgG at 1/5000 dilution;
Exposure time: 30 seconds