

TNFSF13B RABBIT PAB

Cat.#: S216368

Product Name: Anti-TNFSF13B Rabbit Polyclonal Antibody

Synonyms: DTL; BAFF; BLYS; CD257; TALL1; THANK; ZTNF4; TALL-1; TNFSF20

UNIPROT ID: Q9Y275 (Gene Accession - BC020674)

Background: The protein encoded by this gene is a cytokine that belongs to the tumor necrosis factor (TNF) ligand family. This cytokine is a ligand for receptors TNFRSF13B/TACI, TNFRSF17/BCMA, and TNFRSF13C/BAFFR. This cytokine is expressed in B cell lineage cells, and acts as a potent B cell activator. It has been also shown to play an important role in the proliferation and differentiation of B cells. Alternatively spliced transcript variants encoding distinct isoforms have been identified.

Immunogen: Fusion protein of human TNFSF13B

Applications: ELISA, IHC

Recommended Dilutions: IHC: 50–200; ELISA: 1000–5000

Host Species: Rabbit

Clonality: Rabbit Polyclonal

Isotype: Immunogen-specific rabbit IgG

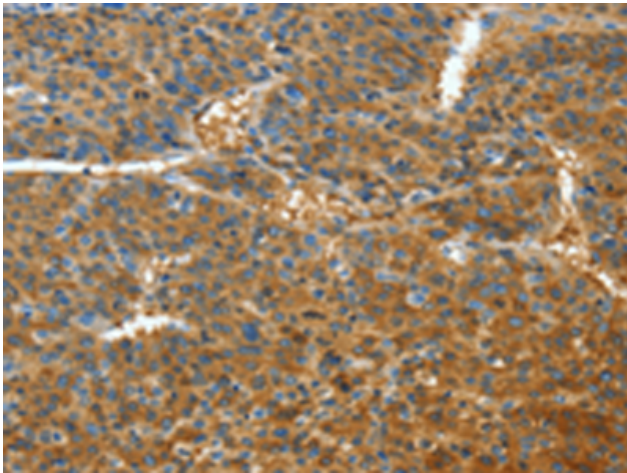
Purification: Antigen affinity purification

Species Reactivity: Human

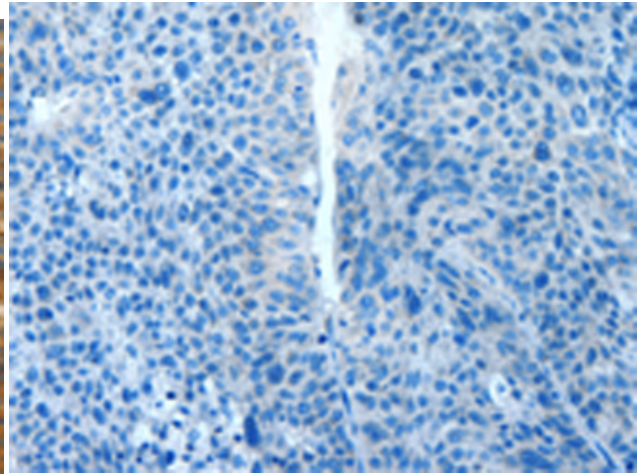
Constituents: PBS (without Mg²⁺ and Ca²⁺), pH 7.4, 150 mM NaCl, 0.05% Sodium Azide and 40% glycerol

Research Areas: Cancer, Immunology

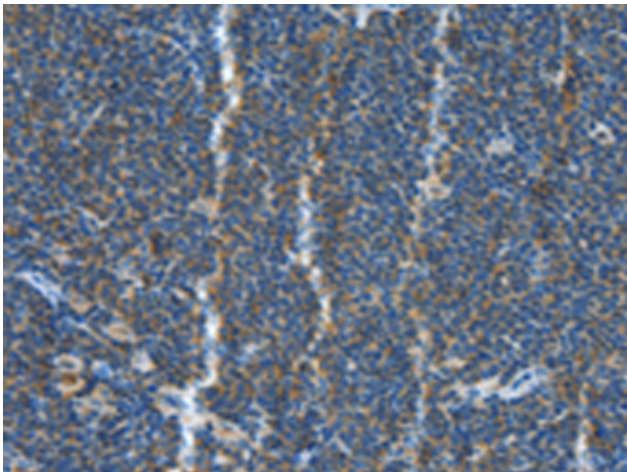
Storage & Shipping: Store at -20°C. Avoid repeated freezing and thawing



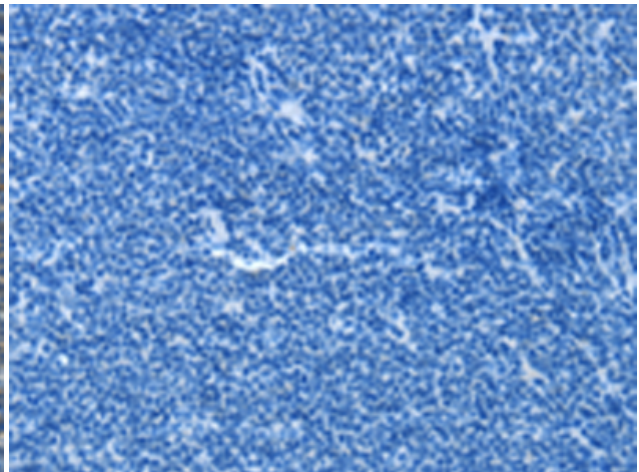
Immunohistochemistry analysis of paraffin embedded Human liver cancer tissue using 216368(TNFSF13B Antibody) at a dilution of 1/30(Cytoplasm).



In comparison with the IHC on the left, the same paraffin-embedded Human liver cancer tissue is first treated with the fusion protein and then with 216368(Anti-TNFSF13B Antibody) at dilution 1/30.



The image on the left is immunohistochemistry of paraffin-embedded Human lymphoma tissue using 216368(Anti-TNFSF13B Antibody) at a dilution of 1/30.



In comparison with the IHC on the left, the same paraffin-embedded Human lymphoma tissue is first treated with fusion protein and then with D220307(Anti-TNFSF13B Antibody) at dilution 1/30.