

## TNF RECEPTOR 2 RABBIT PAB

**Cat.#:** N225995

**Product Name:** Anti-TNF Receptor 2 Rabbit pAb

**Synonyms:** CD120b; p75 TNF receptor; p80 TNF alpha receptor; Soluble TNFR1B variant 1; TBP-2; TBPII; TNF R75; TNFBR; TNFR-II; TNFR1B; TNFR2; TNFR80; TNFR1I; Tnfrsf1b

**UNIPROT ID:** P20333

**Background:** Receptor with high affinity for TNFSF2/TNF-alpha and approximately 5-fold lower affinity for homotrimeric TNFSF1/lymphotoxin-alpha. The TRAF1/TRAF2 complex recruits the apoptotic suppressors BIRC2 and BIRC3 to TNFRSF1B/TNFR2. This receptor mediates most of the metabolic effects of TNF-alpha. Isoform 2 blocks TNF-alpha-induced apoptosis, which suggests that it regulates TNF-alpha function by antagonizing its biological activity.

**Immunogen:** A synthetic peptide of human TNF Receptor II

**Applications:** WB,IHC-F,IHC-P,ICC/IF,FC,IP

**Recommended Dilutions:** WB: 1/500-1/1000 IHC: 1/50-1/100 IF: 1/50-1/200 IP: 1/20 FC: 1/50-1/100

**Host Species:** Rabbit

**Clonality:** Rabbit Polyclonal

**Clone ID:** -

**MW:** Calculated MW: 48 kDa; Observed MW: 65 kDa

**Isotype:** IgG

**Purification:** Affinity Purified

**Species Reactivity:** Human,Mouse,Rat

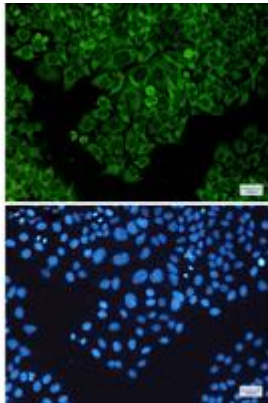
**Conjugation:** Unconjugated

**Modification:** Unmodified

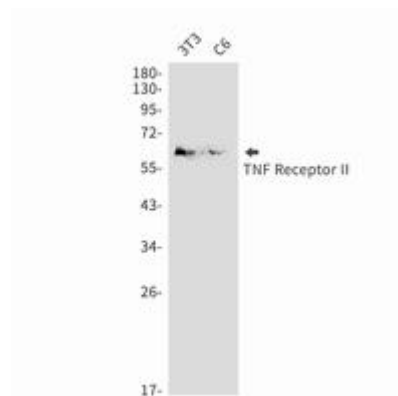
**Constituents:** PBS (without Mg<sup>2+</sup> and Ca<sup>2+</sup>), pH 7.3 containing 50% glycerol, 0.5% BSA and 0.02% sodium azide

**Research Areas:** Cell Biology

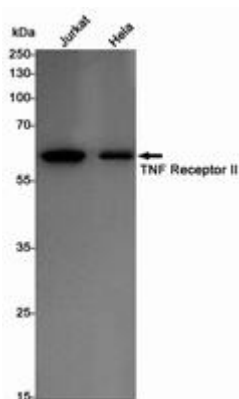
**Storage & Shipping:** Store at -20°C. Avoid repeated freezing and thawing



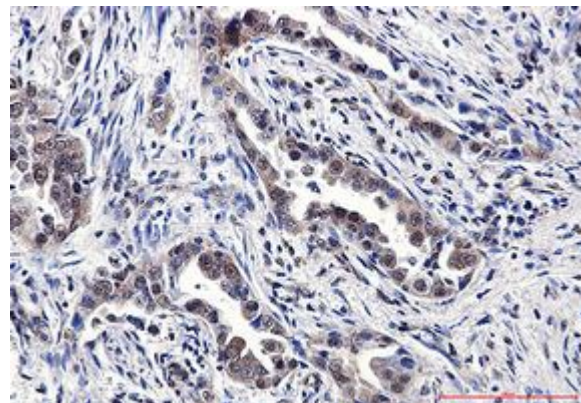
Immunocytochemistry analysis of TNF Receptor II (green) in Hela using TNF Receptor II antibody, and DAPI (blue)



Western blot analysis of TNF Receptor II in 3T3, C6 lysates using TNF Receptor 2 antibody.



Western blot analysis of TNF Receptor II in Jurkat, Hela lysates using TNF Receptor II antibody.



Immunohistochemistry analysis of paraffin-embedded Human lung cancer using TNF Receptor II antibody. High-pressure and temperature Sodium Citrate pH 6.0 was used for antigen retrieval.