

TMPRSS7 RABBIT PAB

Cat.#: S216636

Product Name: Anti-TMPRSS7 Rabbit Polyclonal Antibody

Synonyms:

UNIPROT ID: Q7RTY8 (Gene Accession - BC117322)

Background: Predicted to enable serine-type peptidase activity. Predicted to be involved in proteolysis. Predicted to be integral component of membrane. Predicted to be active in plasma membrane.

Immunogen: Fusion protein of human TMPRSS7

Applications: ELISA, IHC

Recommended Dilutions: IHC: 50-200; ELISA: 5000-10000

Host Species: Rabbit

Clonality: Rabbit Polyclonal

Isotype: Immunogen-specific rabbit IgG

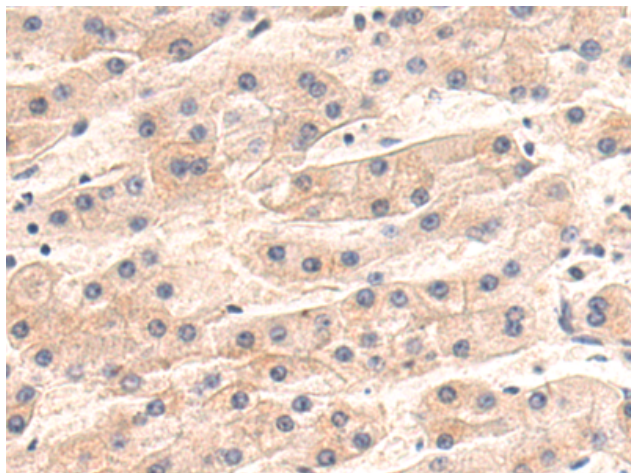
Purification: Antigen affinity purification

Species Reactivity: Human, Mouse, Rat

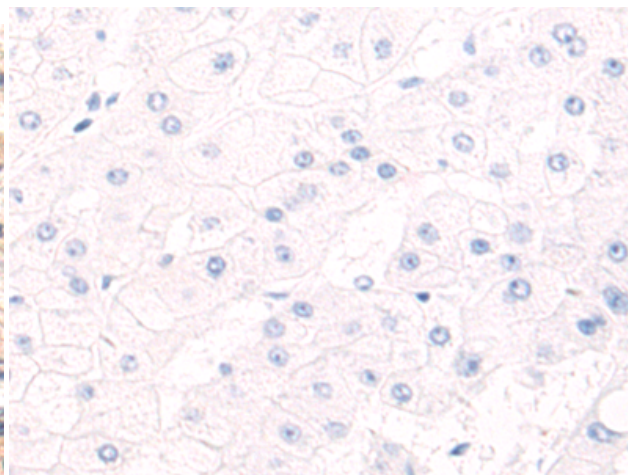
Constituents: PBS (without Mg²⁺ and Ca²⁺), pH 7.4, 150 mM NaCl, 0.05% Sodium Azide and 40% glycerol

Research Areas: Signal Transduction, Cell Biology

Storage & Shipping: Store at -20°C. Avoid repeated freezing and thawing



Immunohistochemistry analysis of paraffin embedded Human liver cancer tissue using 216636 (TMPRSS7 Antibody) at a dilution of 1/55 (Cytoplasm and Cell membrane).



In comparison with the IHC on the left, the same paraffin-embedded Human liver cancer tissue is first treated with the fusion protein and then with 216636 (Anti-TMPRSS7 Antibody) at dilution 1/55.