

TMPRSS5 RABBIT PAB

Cat.#: S217921

Product Name: Anti-TMPRSS5 Rabbit Polyclonal Antibody

Synonyms: SPINESIN

UNIPROT ID: Q9H3S3 (Gene Accession - BC121803)

Background: This gene encodes a protein that belongs to the serine protease family. Serine proteases are known to be involved in many physiological and pathological processes. Alternative splicing results in multiple transcript variants.

Immunogen: Fusion protein of human TMPRSS5

Applications: ELISA, WB, IHC

Recommended Dilutions: IHC: 200-400;WB: 1000-5000;ELISA: 5000-10000

Host Species: Rabbit

Clonality: Rabbit Polyclonal

Isotype: Immunogen-specific rabbit IgG

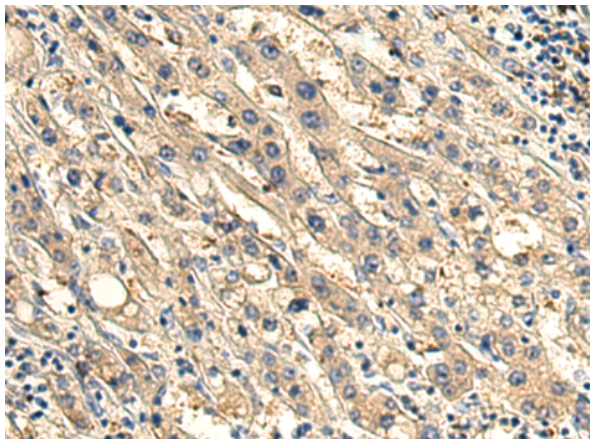
Purification: Antigen affinity purification

Species Reactivity: Human, Mouse

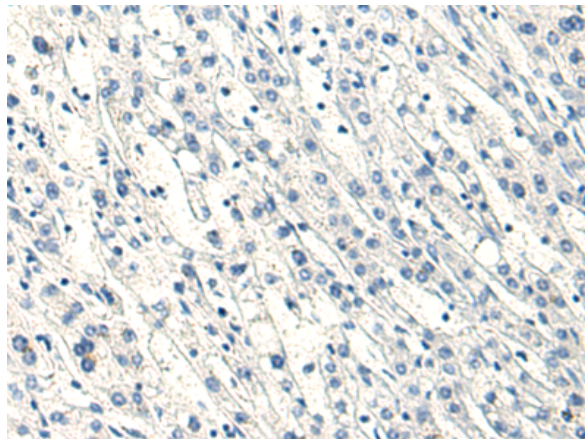
Constituents: PBS (without Mg²⁺ and Ca²⁺), pH 7.4, 150 mM NaCl, 0.05% Sodium Azide and 40% glycerol

Research Areas: Cell Biology

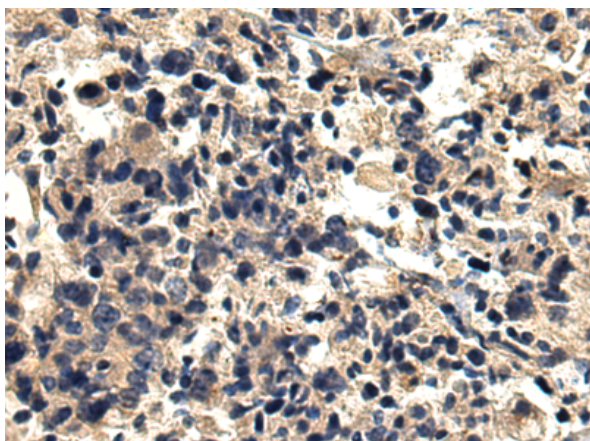
Storage & Shipping: Store at -20°C. Avoid repeated freezing and thawing



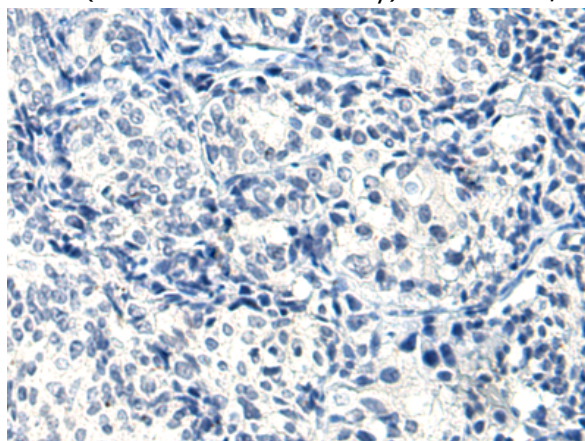
Immunohistochemistry analysis of paraffin embedded Human liver cancer tissue using 217921(TMPRSS5 Antibody) at a dilution of 1/180(Cytoplasm).



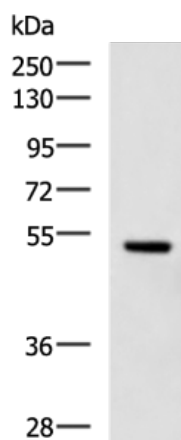
In comparison with the IHC on the left, the same paraffin-embedded Human liver cancer tissue is first treated with the fusion protein and then with 217921(Anti-TMPRSS5 Antibody) at dilution 1/180.



The image on the left is immunohistochemistry of paraffin-embedded Human prostate cancer tissue using 217921(Anti-TMPRSS5 Antibody) at a dilution of 1/180.



In comparison with the IHC on the left, the same paraffin-embedded Human prostate cancer tissue is first treated with fusion protein and then with D223376(Anti-TMPRSS5 Antibody) at dilution 1/180.



Gel: 8%SDS-PAGE, Lysate: 40 µg;
 Lane: Mouse liver tissue lysate;
 Primary antibody: 217921(TMPRSS5 Antibody) at dilution 1/1000;
 Secondary antibody: HRP-conjugated Goat anti rabbit IgG at 1/5000 dilution;
 Exposure time: 3 minutes



Product Description

Pioneering GTPase and Oncogene Product Development since 2010
