

## TMPRSS11F RABBIT PAB

**Cat.#:** S214805

**Product Name:** Anti-TMPRSS11F Rabbit Polyclonal Antibody

**Synonyms:**

**UNIPROT ID:** Q6ZWK6 (Gene Accession - NP\_997290 )

**Background:** TMPRSS11F is a type-II transmembrane protease, similar to hepsin (TMPRSS1). TMPRSS11F is a member of a larger family of membrane attached serine proteases, a poorly defined group that includes TMPRSS11A, B, C, D, E, F, Hepsin, Corin, Matriptase-1, 2 and 3. TMPRSS11F has a domain structure of an aminoterminal cytoplasmic domain, followed by a transmembrane domain, a SEA domain (Sea urchin sperm protein, Enterokinase, Agrin), a short spacer, then the trypsin-like serine protease domain. The SEA domain is thought to play a role in carbohydrate binding in the analogous protein sequences where it is found, but its role in TMPRSS11F is unclear. The cleavage of the Arg206-Ile207 bond is thought to liberate the catalytic domain.

**Immunogen:** Synthetic peptide of human TMPRSS11F

**Applications:** ELISA, WB, IHC

**Recommended Dilutions:** IHC: 25-100;WB: 500-2000;ELISA: 2000-5000

**Host Species:** Rabbit

**Clonality:** Rabbit Polyclonal

**Isotype:** Immunogen-specific rabbit IgG

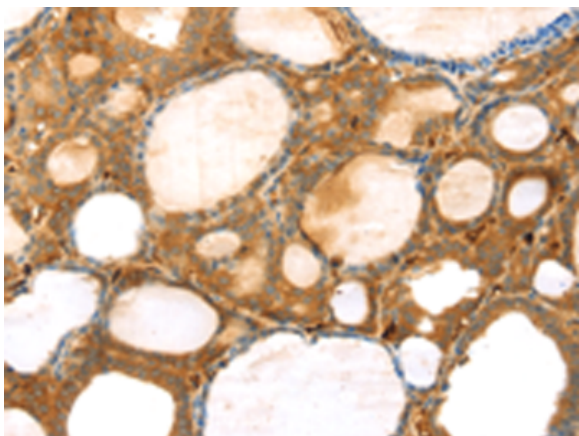
**Purification:** Antigen affinity purification

**Species Reactivity:** Human, Mouse

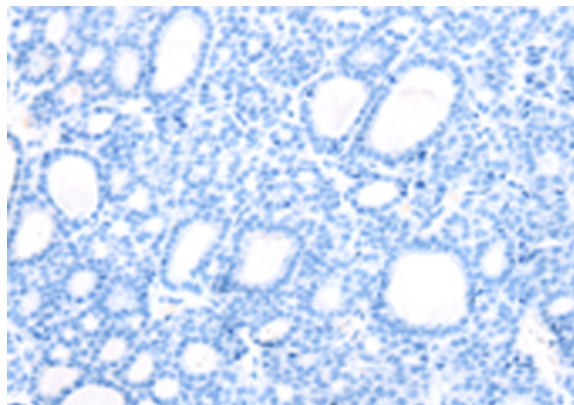
**Constituents:** PBS (without Mg<sup>2+</sup> and Ca<sup>2+</sup>), pH 7.4, 150 mM NaCl, 0.05% Sodium Azide and 40% glycerol

**Research Areas:** Cell Biology

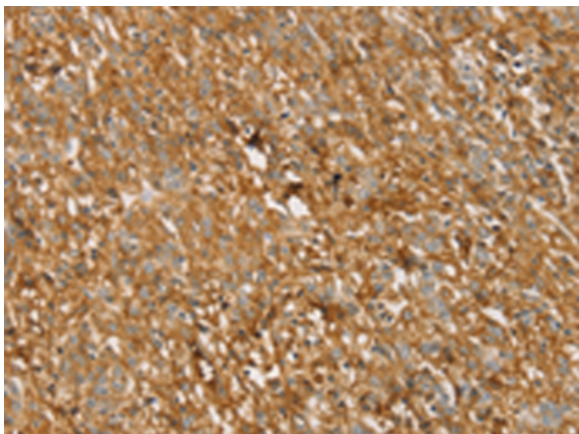
**Storage & Shipping:** Store at -20°C. Avoid repeated freezing and thawing



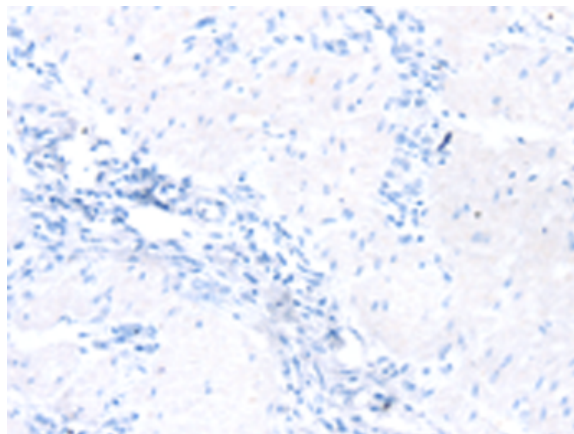
Immunohistochemistry analysis of paraffin embedded Human thyroid cancer tissue using 214805(TMPRSS11F Antibody) at a dilution of 1/30(Cytoplasm).



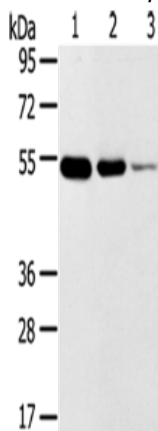
In comparison with the IHC on the left, the same paraffin-embedded Human thyroid cancer tissue is first treated with the synthetic peptide and then with 214805(Anti-TMPRSS11F Antibody) at dilution 1/30.



The image on the left is immunohistochemistry of paraffin-embedded Human gastric cancer tissue using 214805(Anti-TMPRSS11F Antibody) at a dilution of 1/30.



In comparison with the IHC on the left, the same paraffin-embedded Human gastric cancer tissue is first treated with synthetic peptide and then with D162381(Anti-TMPRSS11F Antibody) at dilution 1/30.



Gel: 8%SDS-PAGE, Lysate: 40 µg;  
Lane 1-3: Human thyroid tissue, Human esophagus cancer tissue, human normal rectum tissue;  
Primary antibody: 214805(TMPRSS11F Antibody) at dilution 1/500;  
Secondary antibody: Goat anti rabbit IgG at 1/8000 dilution;  
Exposure time: 1 minute



# Product Description

Pioneering GTPase and Oncogene Product Development since 2010

---