

## TMPRSS11E RABBIT PAB

**Cat.#:** S217923

**Product Name:** Anti-TMPRSS11E Rabbit Polyclonal Antibody

**Synonyms:** DESC1; TMPRSS11E2

**UNIPROT ID:** Q9UL52 (Gene Accession - BC113412 )

**Background:** Serine protease which possesses both gelatinolytic and caseinolytic activities. Shows a preference for Arg in the P1 position (By similarity).

**Immunogen:** Fusion protein of human TMPRSS11E

**Applications:** ELISA, IHC

**Recommended Dilutions:** IHC: 30-150; ELISA: 2000-10000

**Host Species:** Rabbit

**Clonality:** Rabbit Polyclonal

**Isotype:** Immunogen-specific rabbit IgG

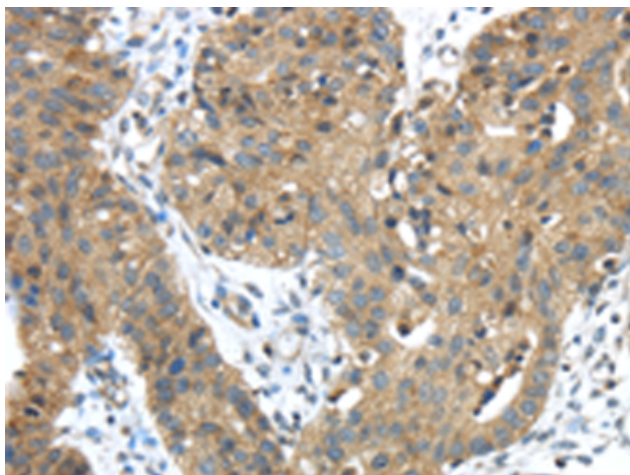
**Purification:** Antigen affinity purification

**Species Reactivity:** Human

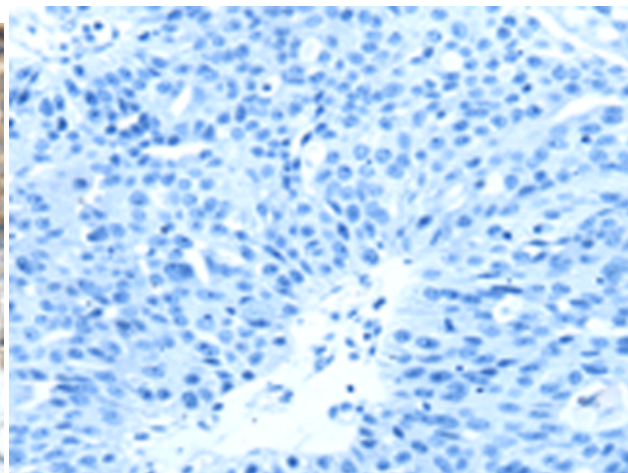
**Constituents:** PBS (without Mg<sup>2+</sup> and Ca<sup>2+</sup>), pH 7.4, 150 mM NaCl, 0.05% Sodium Azide and 40% glycerol

**Research Areas:** Cell Biology

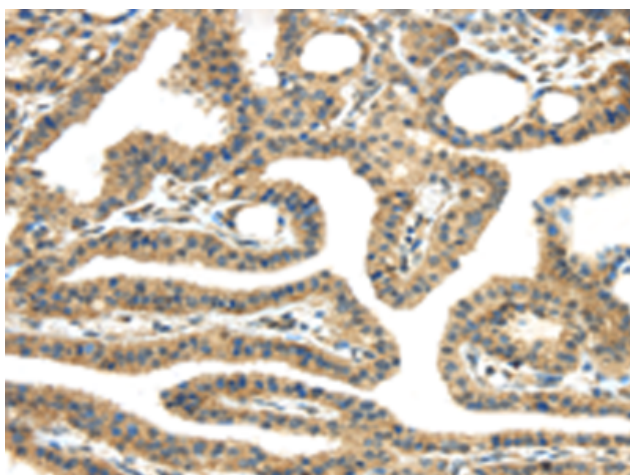
**Storage & Shipping:** Store at -20°C. Avoid repeated freezing and thawing



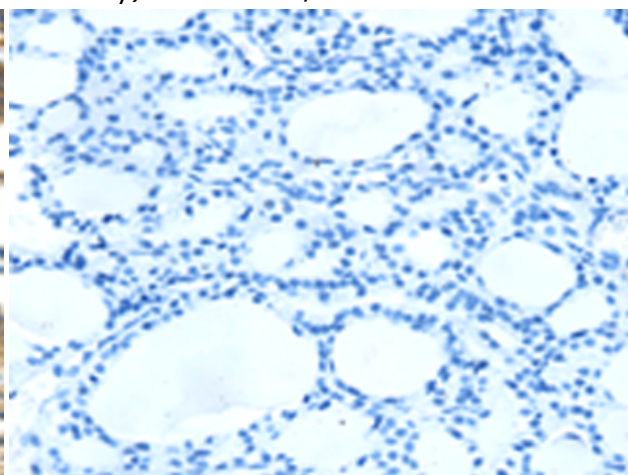
Immunohistochemistry analysis of paraffin embedded Human breast cancer tissue using 217923(TMPRSS11E Antibody) at a dilution of 1/45(Cell membrane).



In comparison with the IHC on the left, the same paraffin-embedded Human breast cancer tissue is first treated with the fusion protein and then with 217923(Anti-TMPRSS11E Antibody) at dilution 1/45.



The image on the left is immunohistochemistry of paraffin-embedded Human thyroid cancer tissue using 217923(Anti-TMPRSS11E Antibody) at a dilution of 1/45.



In comparison with the IHC on the left, the same paraffin-embedded Human thyroid cancer tissue is first treated with fusion protein and then with D223378(Anti-TMPRSS11E Antibody) at dilution 1/45.