

TMPRSS11D RABBIT PAB

Cat.#: S217925

Product Name: Anti-TMPRSS11D Rabbit Polyclonal Antibody

Synonyms: HAT

UNIPROT ID: O60235 (Gene Accession - BC125195)

Background: This gene encodes a trypsin-like serine protease released from the submucosal serous glands onto mucous membrane. It is a type II integral membrane protein and has 29-38% identity in the sequence of the catalytic region with human hepsin, enteropeptidase, acrosin, and mast cell tryptase. The noncatalytic region has little similarity to other known proteins.

Immunogen: Fusion protein of human TMPRSS11D

Applications: ELISA, WB, IHC

Recommended Dilutions: IHC: 25-100;WB: 500-2000;ELISA: 2000-5000

Host Species: Rabbit

Clonality: Rabbit Polyclonal

Isotype: Immunogen-specific rabbit IgG

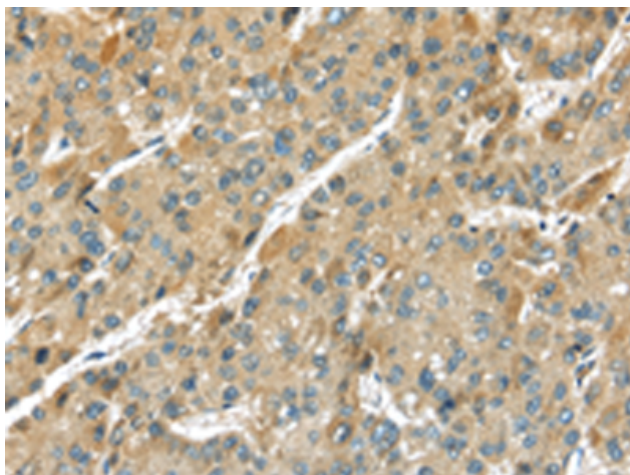
Purification: Antigen affinity purification

Species Reactivity: Human

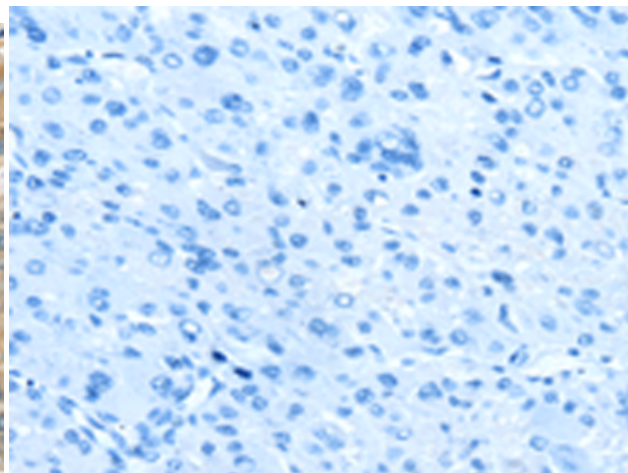
Constituents: PBS (without Mg²⁺ and Ca²⁺), pH 7.4, 150 mM NaCl, 0.05% Sodium Azide and 40% glycerol

Research Areas: Cell Biology

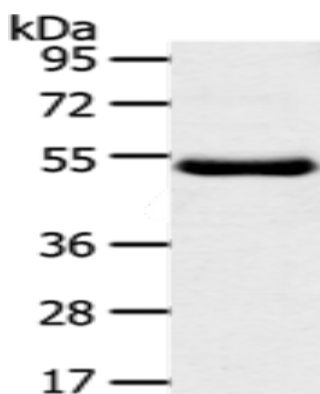
Storage & Shipping: Store at -20°C. Avoid repeated freezing and thawing



Immunohistochemistry analysis of paraffin embedded Human liver cancer tissue using 217925(TMPRSS11D Antibody) at a dilution of 1/35(Cytoplasm and Cell membrane).



In comparison with the IHC on the left, the same paraffin-embedded Human liver cancer tissue is first treated with the fusion protein and then with 217925(Anti-TMPRSS11D Antibody) at dilution 1/35.



Gel: 8%SDS-PAGE, Lysate: 40 µg;
Lane: Human thigh malignant fibrous histiocytoma tissue;
Primary antibody: 217925(TMPRSS11D Antibody) at dilution 1/800;
Secondary antibody: Goat anti rabbit IgG at 1/8000 dilution;
Exposure time: 1 minute