

## TMPRSS11A RABBIT PAB

**Cat.#:** S217924

**Product Name:** Anti-TMPRSS11A Rabbit Polyclonal Antibody

**Synonyms:** ECRG1

**UNIPROT ID:** Q6ZMR5 (Gene Accession - BC111796 )

**Background:** Probable serine protease which may play a role in cellular senescence. Overexpression inhibits cell growth and induce G1 cell cycle arrest.

**Immunogen:** Fusion protein of human TMPRSS11A

**Applications:** ELISA, IHC

**Recommended Dilutions:** IHC: 25-100; ELISA: 2000-5000

**Host Species:** Rabbit

**Clonality:** Rabbit Polyclonal

**Isotype:** Immunogen-specific rabbit IgG

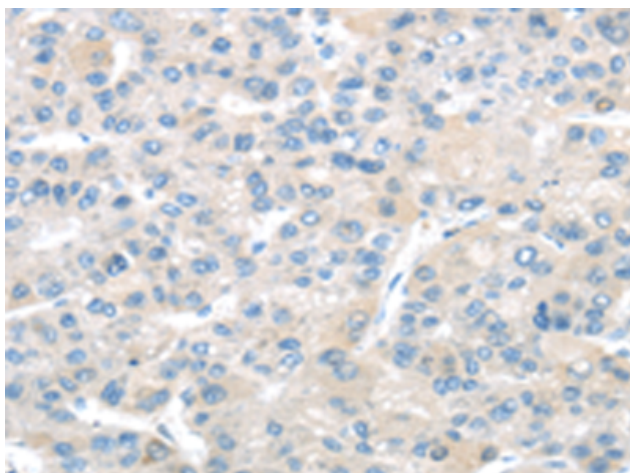
**Purification:** Antigen affinity purification

**Species Reactivity:** Human

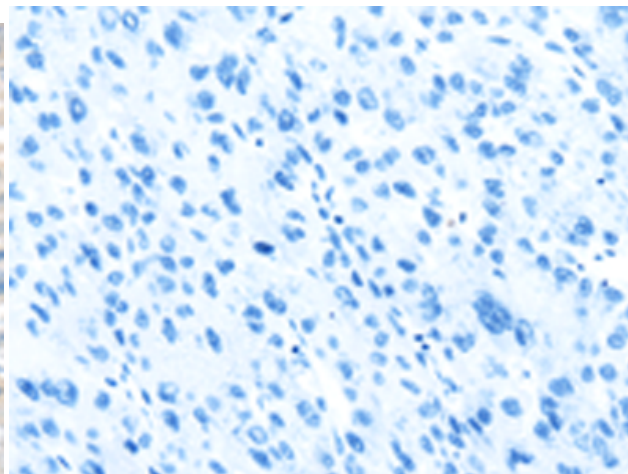
**Constituents:** PBS (without Mg<sup>2+</sup> and Ca<sup>2+</sup>), pH 7.4, 150 mM NaCl, 0.05% Sodium Azide and 40% glycerol

**Research Areas:** Cell Biology

**Storage & Shipping:** Store at -20°C. Avoid repeated freezing and thawing



Immunohistochemistry analysis of paraffin embedded Human liver cancer tissue using 217924(TMPRSS11A Antibody) at a dilution of 1/20(Cell membrane).



In comparison with the IHC on the left, the same paraffin-embedded Human liver cancer tissue is first treated with the fusion protein and then with 217924(Anti-TMPRSS11A Antibody) at dilution 1/20.