

TMEM9B RABBIT PAB

Cat.#: S219582

Product Name: Anti-TMEM9B Rabbit Polyclonal Antibody

Synonyms: C11orf15

UNIPROT ID: Q9NQ34 (Gene Accession - BC015884)

Background: Involved in positive regulation of I-kappaB kinase/NF-kappaB signaling. Predicted to be located in early endosome membrane and lysosomal membrane. Predicted to be integral component of membrane.

Immunogen: Fusion protein of human TMEM9B

Applications: ELISA, WB, IHC

Recommended Dilutions: IHC: 100-300;WB: 1000-5000;ELISA: 5000-10000

Host Species: Rabbit

Clonality: Rabbit Polyclonal

Isotype: Immunogen-specific rabbit IgG

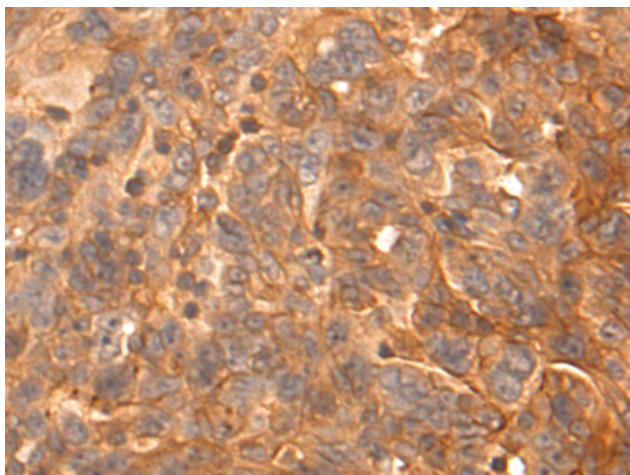
Purification: Antigen affinity purification

Species Reactivity: Human, Mouse

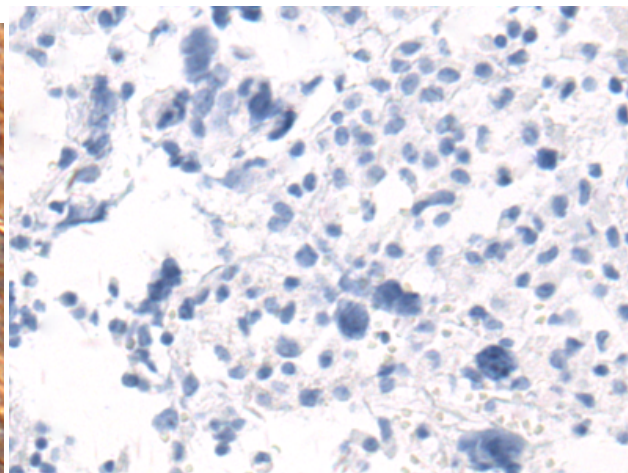
Constituents: PBS (without Mg²⁺ and Ca²⁺), pH 7.4, 150 mM NaCl, 0.05% Sodium Azide and 40% glycerol

Research Areas: Epigenetics and Nuclear Signaling

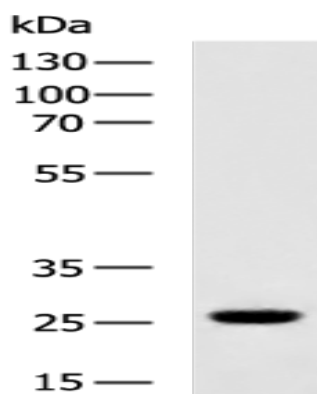
Storage & Shipping: Store at -20°C. Avoid repeated freezing and thawing



Immunohistochemistry analysis of paraffin embedded Human breast cancer tissue using 219582(TMEM9B Antibody) at a dilution of 1/70(Cytoplasm).



In comparison with the IHC on the left, the same paraffin-embedded Human breast cancer tissue is first treated with the fusion protein and then with 219582(Anti-TMEM9B Antibody) at dilution 1/70.



Gel: 8%SDS-PAGE, Lysate: 40 μ g;
Lane: Mouse brain tissue lysate;
Primary antibody: 219582(TMEM9B Antibody)
at dilution 1/1200;
Secondary antibody: HRP-conjugated Goat
anti rabbit IgG at 1/5000 dilution;
Exposure time: 8 seconds