

TMEM8B RABBIT PAB

Cat.#: S213902

Product Name: Anti-TMEM8B Rabbit Polyclonal Antibody

Synonyms: NGX6, NAG-5, C9orf127, RPI1-112J3.10

UNIPROT ID: A6NDV4 (Gene Accession - NP_057530)

Background: May function as a regulator of the EGFR pathway. Probable tumor suppressor which may function in cell growth, proliferation and adhesion.

Immunogen: Synthetic peptide of human TMEM8B

Applications: ELISA, IHC

Recommended Dilutions: IHC: 25-100; ELISA: 1000-5000

Host Species: Rabbit

Clonality: Rabbit Polyclonal

Isotype: Immunogen-specific rabbit IgG

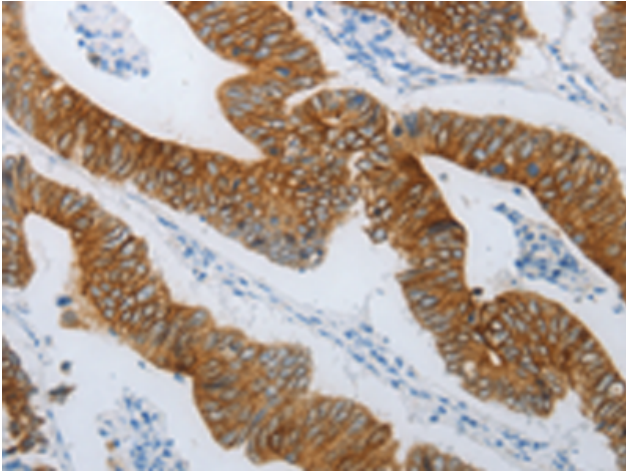
Purification: Antigen affinity purification

Species Reactivity: Human, Mouse

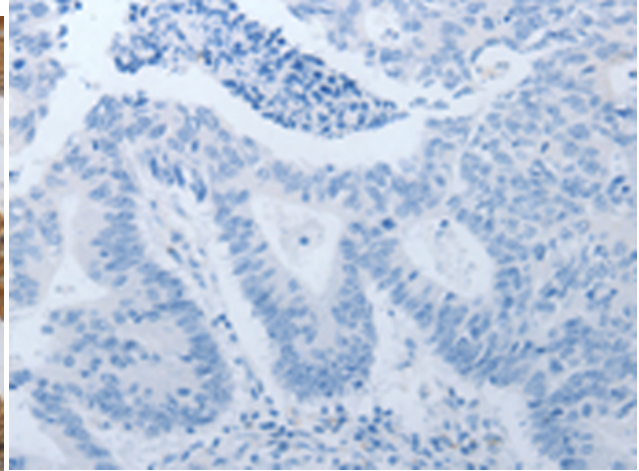
Constituents: PBS (without Mg²⁺ and Ca²⁺), pH 7.4, 150 mM NaCl, 0.05% Sodium Azide and 40% glycerol

Research Areas: Cancer

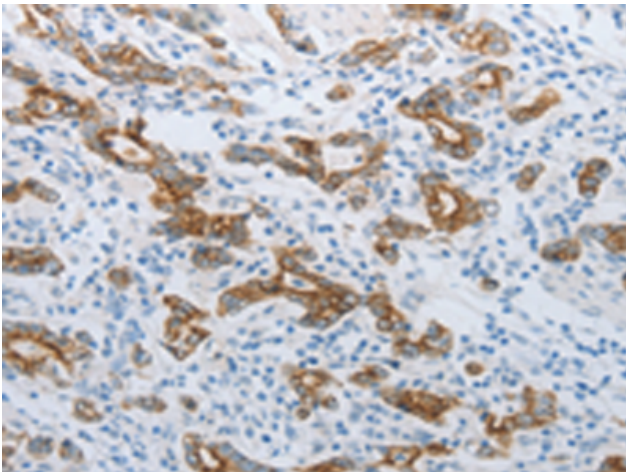
Storage & Shipping: Store at -20°C. Avoid repeated freezing and thawing



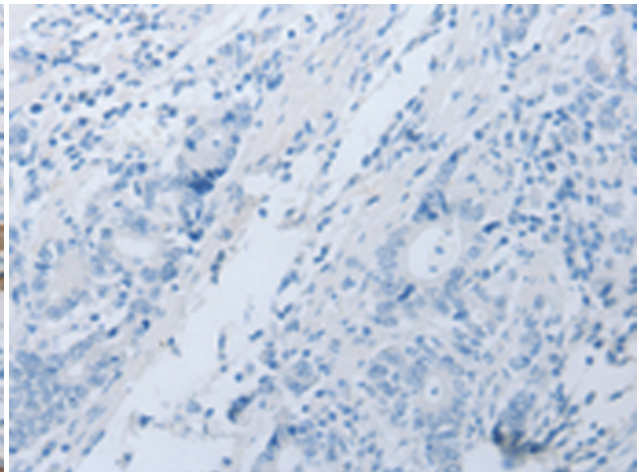
Immunohistochemistry analysis of paraffin-embedded Human colon cancer tissue using 213902(TMEM8B Antibody) at a dilution of 1/15(Cytoplasm, Cell membrane).



In comparison with the IHC on the left, the same paraffin-embedded Human colon cancer tissue is first treated with the synthetic peptide and then with 213902(Anti-TMEM8B Antibody) at dilution 1/15.



The image on the left is immunohistochemistry of paraffin-embedded Human gastric cancer tissue using 213902(Anti-TMEM8B Antibody) at a dilution of 1/15.



In comparison with the IHC on the left, the same paraffin-embedded Human gastric cancer tissue is first treated with synthetic peptide and then with D161030(Anti-TMEM8B Antibody) at dilution 1/15.