

## TMEM45A RABBIT PAB

**Cat.#:** S221950

**Product Name:** Anti-TMEM45A Rabbit Polyclonal Antibody

**Synonyms:** DERP7; DNAPTP4

**UNIPROT ID:** Q9NWC5 (Gene Accession - NP\_060474 )

**Background:** High expression and prognostic value of TMEM45A has been recently reported in various types of human tumors. High levels of TMEM45A expression in tumors may be indicative of potential resistance to cancer therapy, making TMEM45A an interesting biomarker for resistance.

**Immunogen:** Synthetic peptide of human TMEM45A

**Applications:** ELISA, IHC

**Recommended Dilutions:** IHC: 25-100; ELISA: 5000-10000

**Host Species:** Rabbit

**Clonality:** Rabbit Polyclonal

**Isotype:** Immunogen-specific rabbit IgG

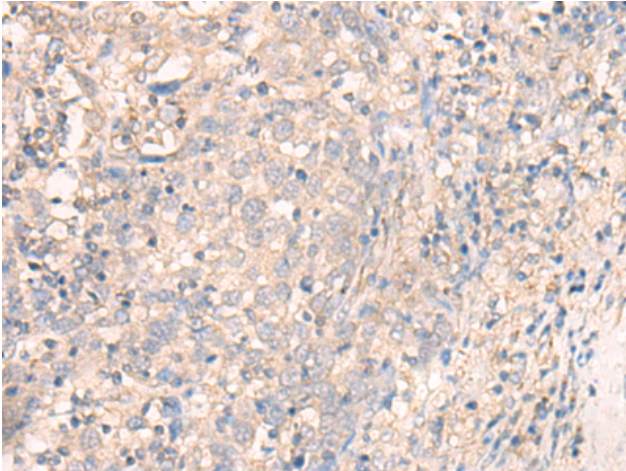
**Purification:** Antigen affinity purification

**Species Reactivity:** Human

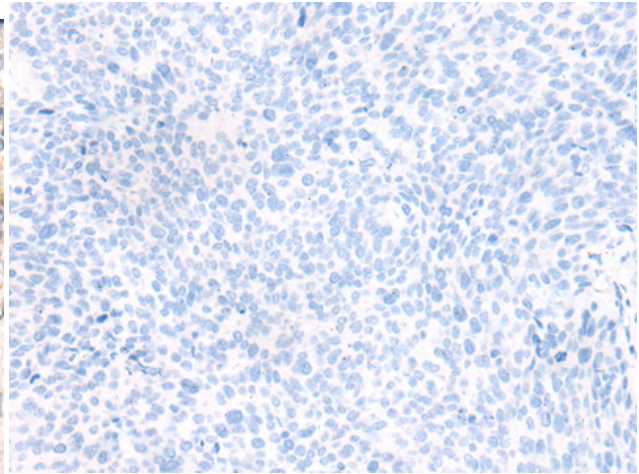
**Constituents:** PBS (without Mg<sup>2+</sup> and Ca<sup>2+</sup>), pH 7.4, 150 mM NaCl, 0.05% Sodium Azide and 40% glycerol

**Research Areas:** Cell Biology

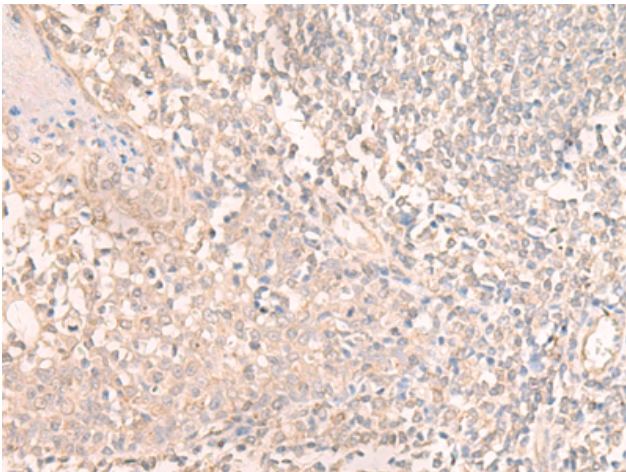
**Storage & Shipping:** Store at -20°C. Avoid repeated freezing and thawing



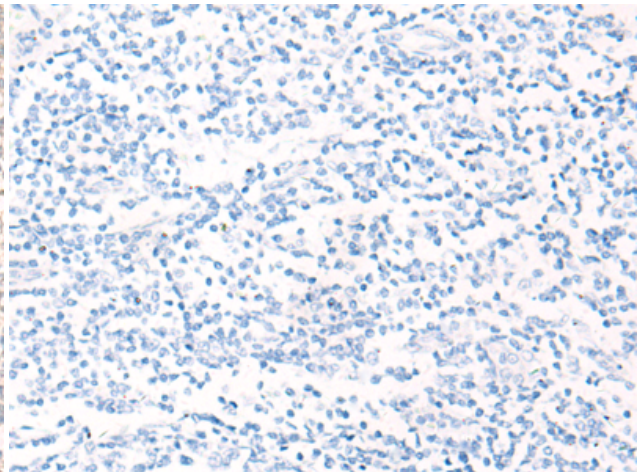
Immunohistochemistry analysis of paraffin embedded Human cervical cancer tissue using 221950 (TMEM45A Antibody) at a dilution of 1/20 (Cytoplasm and Cell membrane).



In comparison with the IHC on the left, the same paraffin-embedded Human cervical cancer tissue is first treated with the synthetic peptide and then with 221950 (Anti-TMEM45A Antibody) at dilution 1/20.



The image on the left is immunohistochemistry of paraffin-embedded Human tonsil tissue using 221950 (Anti-TMEM45A Antibody) at a dilution of 1/20.



In comparison with the IHC on the left, the same paraffin-embedded Human tonsil tissue is first treated with synthetic peptide and then with 221950 (Anti-TMEM45A Antibody) at dilution 1/20.