

TMEM248 RABBIT PAB

Cat.#: S218641

Product Name: Anti-TMEM248 Rabbit Polyclonal Antibody

Synonyms: C7orf42

UNIPROT ID: Q9NWD8 (Gene Accession - BC008675)

Background: The function of this protein remains unknown.

Immunogen: Fusion protein of human TMEM248

Applications: ELISA, IHC

Recommended Dilutions: IHC: 30-150; ELISA: 5000-10000

Host Species: Rabbit

Clonality: Rabbit Polyclonal

Isotype: Immunogen-specific rabbit IgG

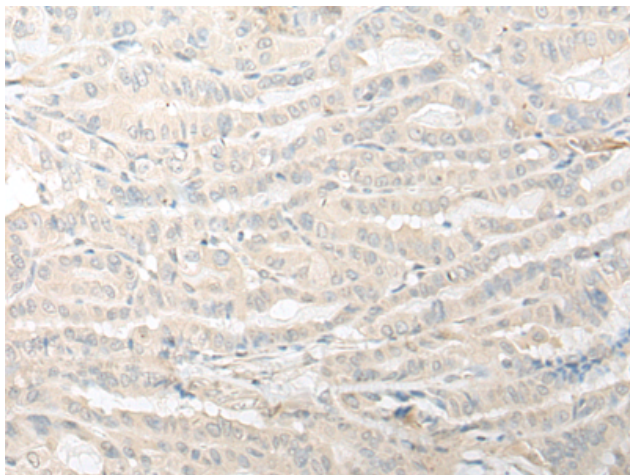
Purification: Antigen affinity purification

Species Reactivity: Human, Mouse, Rat

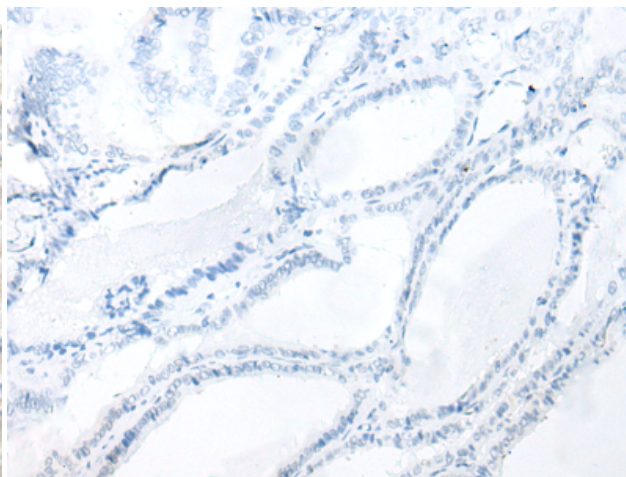
Constituents: PBS (without Mg²⁺ and Ca²⁺), pH 7.4, 150 mM NaCl, 0.05% Sodium Azide and 40% glycerol

Research Areas: Cell Biology

Storage & Shipping: Store at -20°C. Avoid repeated freezing and thawing



Immunohistochemistry analysis of paraffin embedded Human thyroid cancer tissue using 218641 (TMEM248 Antibody) at a dilution of 1/30 (Cytoplasm).



In comparison with the IHC on the left, the same paraffin-embedded Human thyroid cancer tissue is first treated with the fusion protein and then with 218641 (Anti-TMEM248 Antibody) at dilution 1/30.