

## TMEFF2 RABBIT PAB

**Cat.#:** S221031

**Product Name:** Anti-TMEFF2 Rabbit Polyclonal Antibody

**Synonyms:** TR; HPPI; TPEF; TENB2; CT120.2

**UNIPROT ID:** Q9UIK5 (Gene Accession - NP\_057276 )

**Background:** TMEFF2 (transmembrane protein with EGF-like and two follistatin-like domains 2), a gene encoding a plasma membrane protein with two follistatin-like domains and one epidermal growth factor-like domain, had limited normal tissue distribution and was highly overexpressed in prostate cancer. The shedded form up-regulates cancer cell proliferation, probably by promoting ERK1/2 phosphorylation.

**Immunogen:** Synthetic peptide of human TMEFF2

**Applications:** ELISA, IHC

**Recommended Dilutions:** IHC: 25-100; ELISA: 2000-5000

**Host Species:** Rabbit

**Clonality:** Rabbit Polyclonal

**Isotype:** Immunogen-specific rabbit IgG

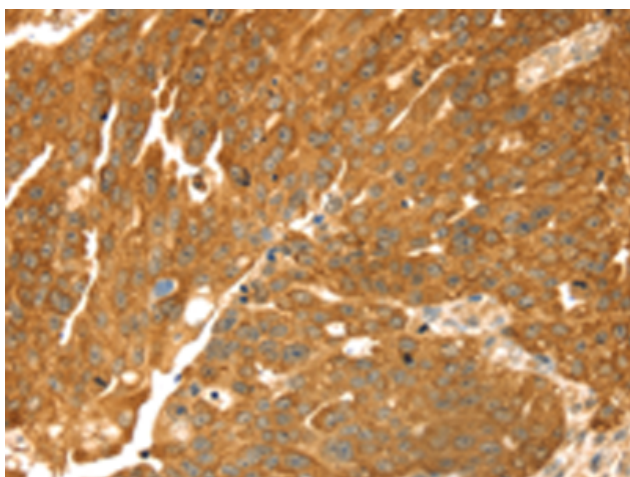
**Purification:** Antigen affinity purification

**Species Reactivity:** Human, Mouse

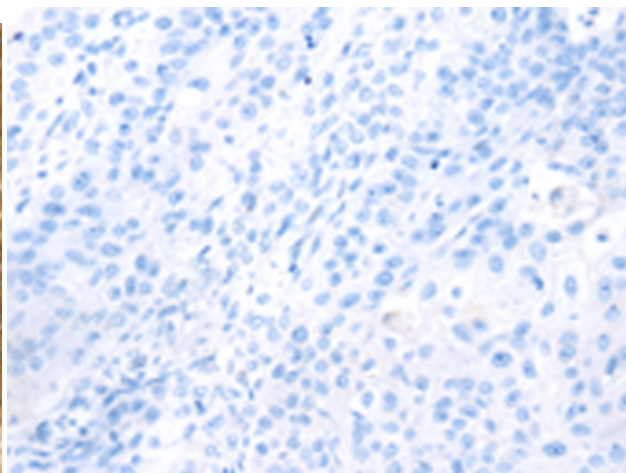
**Constituents:** PBS (without Mg<sup>2+</sup> and Ca<sup>2+</sup>), pH 7.4, 150 mM NaCl, 0.05% Sodium Azide and 40% glycerol

**Research Areas:** Cancer

**Storage & Shipping:** Store at -20°C. Avoid repeated freezing and thawing



Immunohistochemistry analysis of paraffin embedded Human breast cancer tissue using 221031(TMEFF2 Antibody) at a dilution of 1/35(Cytoplasm).



In comparison with the IHC on the left, the same paraffin-embedded Human breast cancer tissue is first treated with the synthetic peptide and then with 221031(Anti-TMEFF2 Antibody) at dilution 1/35.