

TMED10 RABBIT PAB

Cat.#: S219270

Product Name: Anti-TMED10 Rabbit Polyclonal Antibody

Synonyms: p23; TMP21; p24d1; S311125; Tmp-21-I; S3111125; P24(Delta)

UNIPROT ID: P49755 (Gene Accession - BC001496)

Background: This gene is a member of the EMP24/GP25L/p24 family and encodes a protein with a GOLD domain. This type I membrane protein is localized to the plasma membrane and golgi cisternae and is involved in vesicular protein trafficking. The protein is also a member of a heteromeric secretase complex and regulates the complex's gamma-secretase activity without affecting its epsilon-secretase activity. Mutations in this gene have been associated with early-onset familial Alzheimer's disease. This gene has a pseudogene on chromosome 8.

Immunogen: Fusion protein of human TMED10

Applications: ELISA, WB, IHC

Recommended Dilutions: IHC: 50-200; WB: 1000-5000; ELISA: 5000-10000

Host Species: Rabbit

Clonality: Rabbit Polyclonal

Isotype: Immunogen-specific rabbit IgG

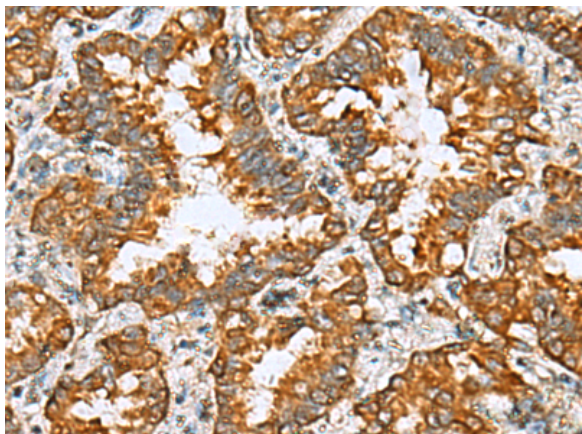
Purification: Antigen affinity purification

Species Reactivity: Human, Mouse, Rat

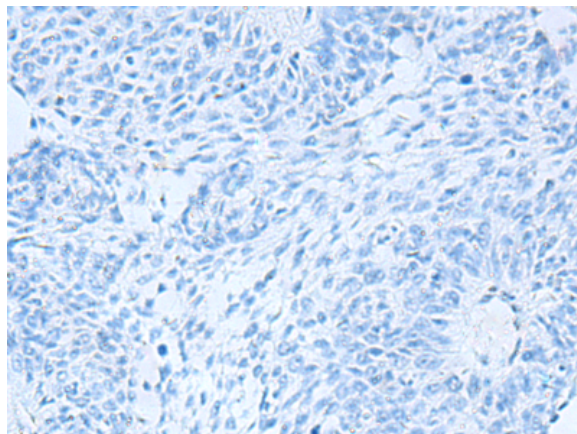
Constituents: PBS (without Mg²⁺ and Ca²⁺), pH 7.4, 150 mM NaCl, 0.05% Sodium Azide and 40% glycerol

Research Areas: Signal Transduction, Neuroscience

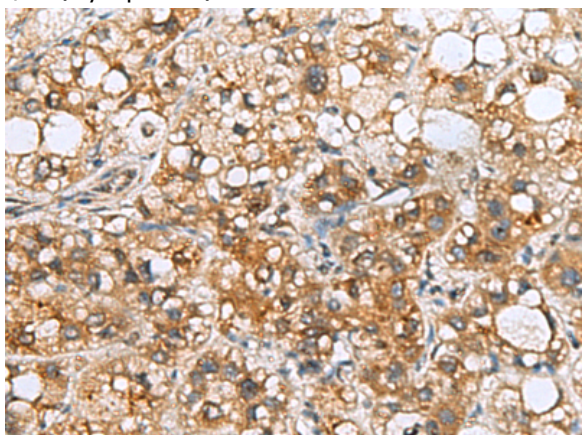
Storage & Shipping: Store at -20°C. Avoid repeated freezing and thawing



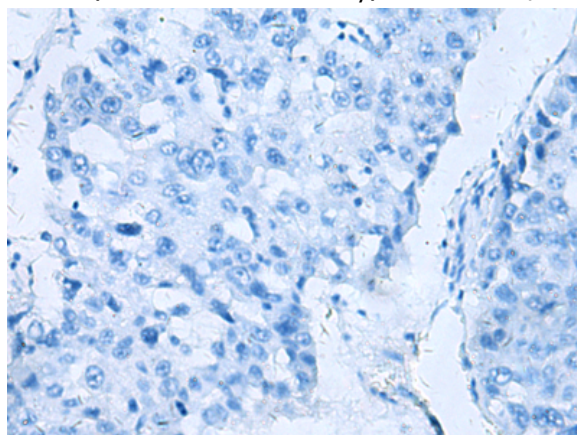
Immunohistochemistry analysis of paraffin embedded Human lung cancer tissue using 219270(TMED10 Antibody) at a dilution of 1/65(Cytoplasm).



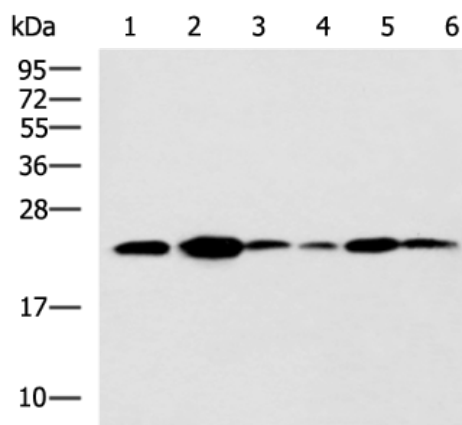
In comparison with the IHC on the left, the same paraffin-embedded Human lung cancer tissue is first treated with the fusion protein and then with 219270(Anti-TMED10 Antibody) at dilution 1/65.



The image on the left is immunohistochemistry of paraffin-embedded Human liver cancer tissue using 219270(Anti-TMED10 Antibody) at a dilution of 1/65.



In comparison with the IHC on the left, the same paraffin-embedded Human liver cancer tissue is first treated with fusion protein and then with D226161(Anti-TMED10 Antibody) at dilution 1/65.



Gel: 12%SDS-PAGE, Lysate: 40 µg;
 Lane 1-6: NIH/3T3 cell, Mouse Pancreas tissue, Rat lung tissue, Mouse liver tissue, Hela, Raji cell lysates;
 Primary antibody: 219270(TMED10 Antibody) at dilution 1/900;
 Secondary antibody: HRP-conjugated Goat anti rabbit IgG at 1/5000 dilution;
 Exposure time: 30 seconds



Product Description

Pioneering GTPase and Oncogene Product Development since 2010
