

TMC7 RABBIT PAB

Cat.#: S222431

Product Name: Anti-TMC7 Rabbit Polyclonal Antibody

Synonyms:

UNIPROT ID: Q7Z402 (Gene Accession - NP_079123)

Background: Predicted to enable mechanosensitive ion channel activity. Predicted to be involved in ion transmembrane transport. Predicted to be integral component of plasma membrane.

Immunogen: Synthetic peptide of human TMC7

Applications: ELISA, WB, IHC

Recommended Dilutions: IHC: 50-200;WB: 1000-5000;ELISA: 5000-10000

Host Species: Rabbit

Clonality: Rabbit Polyclonal

Isotype: Immunogen-specific rabbit IgG

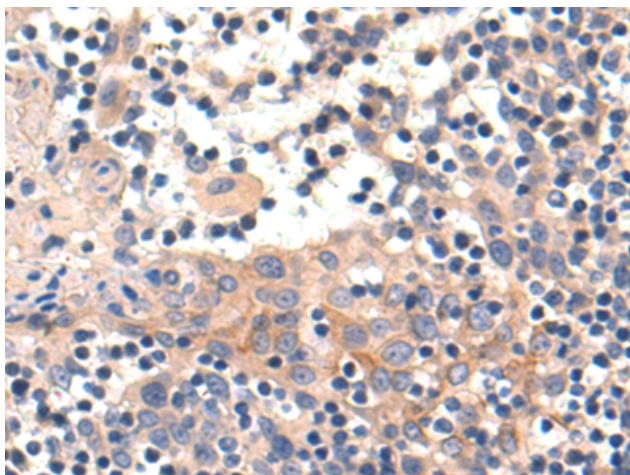
Purification: Antigen affinity purification

Species Reactivity: Human, Mouse

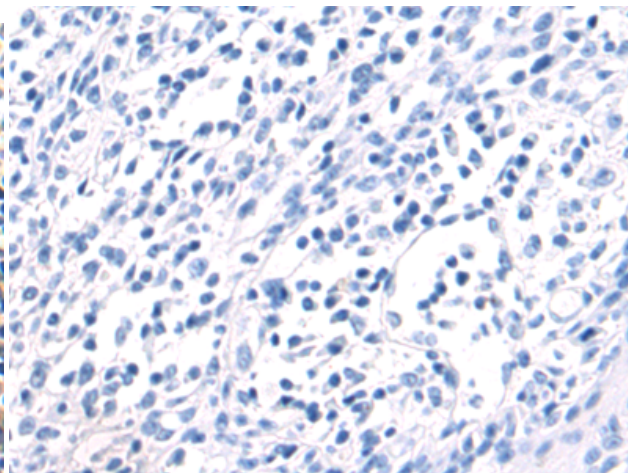
Constituents: PBS (without Mg²⁺ and Ca²⁺), pH 7.4, 150 mM NaCl, 0.05% Sodium Azide and 40% glycerol

Research Areas: Cell Biology

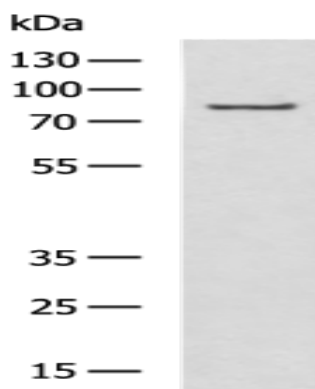
Storage & Shipping: Store at -20°C. Avoid repeated freezing and thawing



Immunohistochemistry analysis of paraffin embedded Human tonsil tissue using 222431(TMC7 Antibody) at a dilution of 1/50(Cytoplasm and Cell membrane).



In comparison with the IHC on the left, the same paraffin-embedded Human tonsil tissue is first treated with the synthetic peptide and then with 222431(Anti-TMC7 Antibody) at dilution 1/50.



Gel: 8%SDS-PAGE, Lysate: 40 µg;
Lane: Mouse liver tissue lysate;
Primary antibody: 222431(TMC7 Antibody) at dilution 1/1150;
Secondary antibody: HRP-conjugated Goat anti rabbit IgG at 1/5000 dilution;
Exposure time: 10 seconds