

## TM7SF2 RABBIT PAB

**Cat.#:** S221029

**Product Name:** Anti-TM7SF2 Rabbit Polyclonal Antibody

**Synonyms:** ANG1; NET47; DHCR14A

**UNIPROT ID:** O76062 (Gene Accession - NP\_003264 )

**Background:** Transmembrane 7 superfamily member 2 (TM7SF2, Sterol C14-reductase, 3beta-hydroxysterol Delta-reductase) is a 418 amino acid gene product that belongs to the ERG4/ERG24 family. TM7SF2 is a seven pass transmembrane protein that can localize to the membrane of the endoplasmic reticulum. TM7SF2 is involved in the conversion of lanosterol to cholesterol and, specifically, catalyzes the NADPH dependant reduction of 4,4-dimethyl-5-alpha-cholesta-8,14,24-trien-3-beta-ol to 4,4-dimethyl-5-alpha-cholesta-8,24-dien-3-beta-ol and NADP+.

**Immunogen:** Synthetic peptide of human TM7SF2

**Applications:** ELISA, WB, IHC

**Recommended Dilutions:** IHC: 25-100;WB: 500-2000;ELISA: 2000-5000

**Host Species:** Rabbit

**Clonality:** Rabbit Polyclonal

**Isotype:** Immunogen-specific rabbit IgG

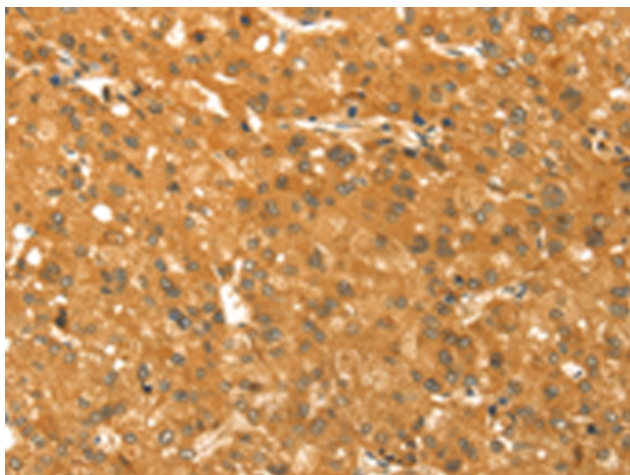
**Purification:** Antigen affinity purification

**Species Reactivity:** Human, Mouse

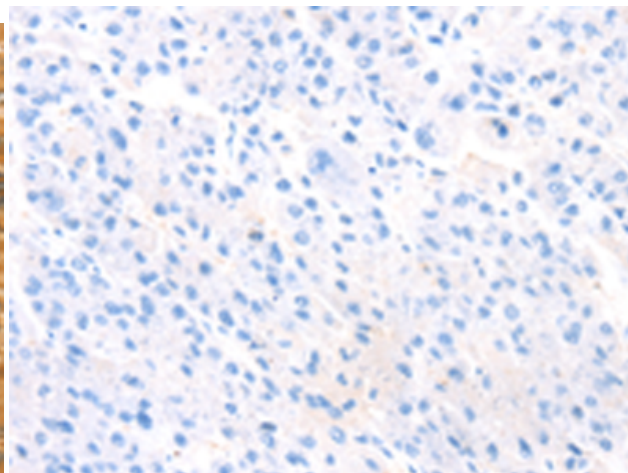
**Constituents:** PBS (without Mg<sup>2+</sup> and Ca<sup>2+</sup>), pH 7.4, 150 mM NaCl, 0.05% Sodium Azide and 40% glycerol

**Research Areas:** Metabolism

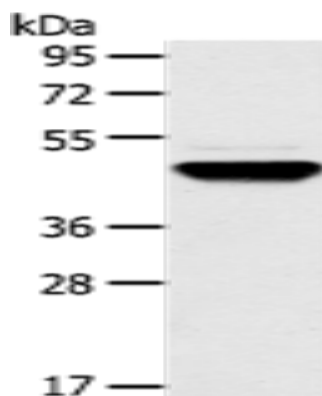
**Storage & Shipping:** Store at -20°C. Avoid repeated freezing and thawing



Immunohistochemistry analysis of paraffin embedded Human liver cancer tissue using 221029(TM7SF2 Antibody) at a dilution of 1/30(Cytoplasm).



In comparison with the IHC on the left, the same paraffin-embedded Human liver cancer tissue is first treated with the synthetic peptide and then with 221029(Anti-TM7SF2 Antibody) at dilution 1/30.



Gel: 8%SDS-PAGE, Lysate: 40  $\mu$ g;  
Lane: Human fetal brain tissue;  
Primary antibody: 221029(TM7SF2 Antibody) at dilution 1/500;  
Secondary antibody: Goat anti rabbit IgG at 1/8000 dilution;  
Exposure time: 1 minute