

## TLK2 RABBIT PAB

**Cat.#:** S217913

**Product Name:** Anti-TLK2 Rabbit Polyclonal Antibody

**Synonyms:** HsHPK; MRD57; PKU-ALPHA

**UNIPROT ID:** Q86UE8 (Gene Accession - BC044925 )

**Background:** This gene encodes a nuclear serine/threonine kinase that was first identified in Arabidopsis. The encoded protein is thought to function in the regulation of chromatin assembly in the S phase of the cell cycle by regulating the levels of a histone H3/H4 chaperone. This protein is associated with double-strand break repair of DNA damage caused by radiation. Pseudogenes of this gene are present on chromosomes 10 and 17. Alternate splicing results in multiple transcript variants.

**Immunogen:** Fusion protein of human TLK2

**Applications:** ELISA, WB, IHC

**Recommended Dilutions:** IHC: 50-200;WB: 500-2000;ELISA: 5000-10000

**Host Species:** Rabbit

**Clonality:** Rabbit Polyclonal

**Isotype:** Immunogen-specific rabbit IgG

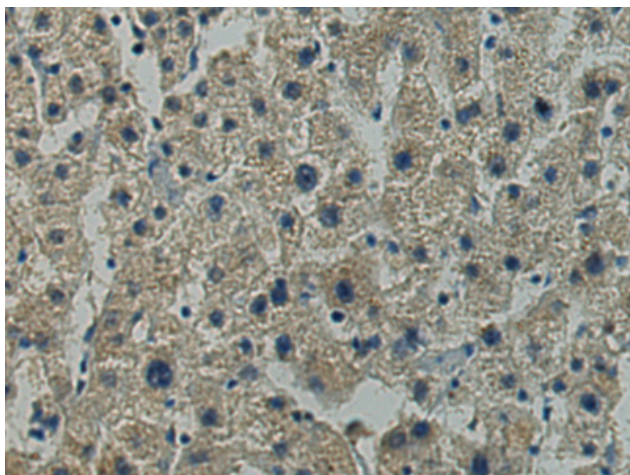
**Purification:** Antigen affinity purification

**Species Reactivity:** Human, Mouse

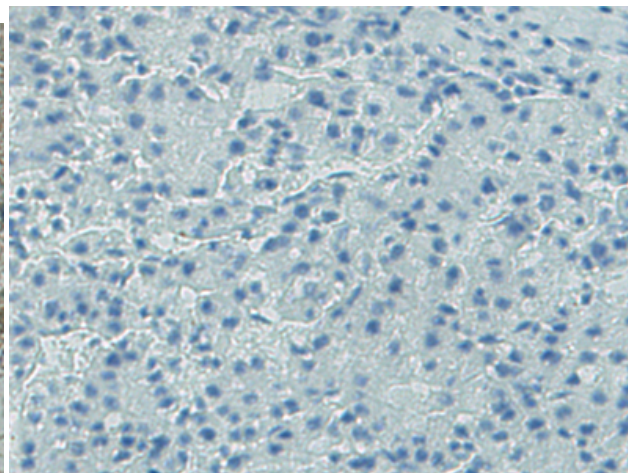
**Constituents:** PBS (without Mg<sup>2+</sup> and Ca<sup>2+</sup>), pH 7.4, 150 mM NaCl, 0.05% Sodium Azide and 40% glycerol

**Research Areas:** Epigenetics and Nuclear Signaling, Cancer

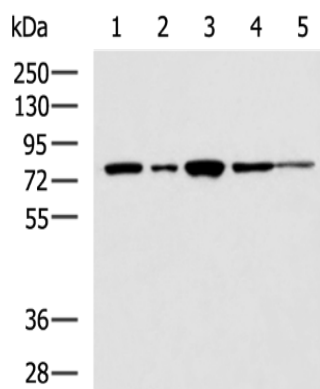
**Storage & Shipping:** Store at -20°C. Avoid repeated freezing and thawing



Immunohistochemistry analysis of paraffin embedded Human liver cancer tissue using 217913(TLK2 Antibody) at a dilution of 1/120(Cytoplasm).



In comparison with the IHC on the left, the same paraffin-embedded Human liver cancer tissue is first treated with the fusion protein and then with 217913(Anti-TLK2 Antibody) at dilution 1/120.



Gel: 8%SDS-PAGE, Lysate: 40  $\mu$ g;  
Lane 1-5: 293T, HT-29, RAW264.7, LOVO, TM4 cell lysates;  
Primary antibody: 217913(TLK2 Antibody) at dilution 1/650;  
Secondary antibody: HRP-conjugated Goat anti rabbit IgG at 1/5000 dilution;  
Exposure time: 10 seconds