

TKFC RABBIT PAB

Cat.#: S218573

Product Name: Anti-TKFC Rabbit Polyclonal Antibody

Synonyms: DAK; NET45

UNIPROT ID: Q3LXA3 (Gene Accession - BC001341)

Background: This gene is a member of the family of dihydroxyacetone kinases, which have a protein structure distinct from other kinases. The product of this gene phosphorylates dihydroxyacetone, and also catalyzes the formation of riboflavin 4',5'-phosphate (aka cyclin FMN) from FAD. Several alternatively spliced transcript variants have been identified, but the full-length nature of only one has been determined.

Immunogen: Fusion protein of human TKFC

Applications: ELISA, WB, IHC

Recommended Dilutions: IHC: 30-150;WB: 500-2000;ELISA: 5000-10000

Host Species: Rabbit

Clonality: Rabbit Polyclonal

Isotype: Immunogen-specific rabbit IgG

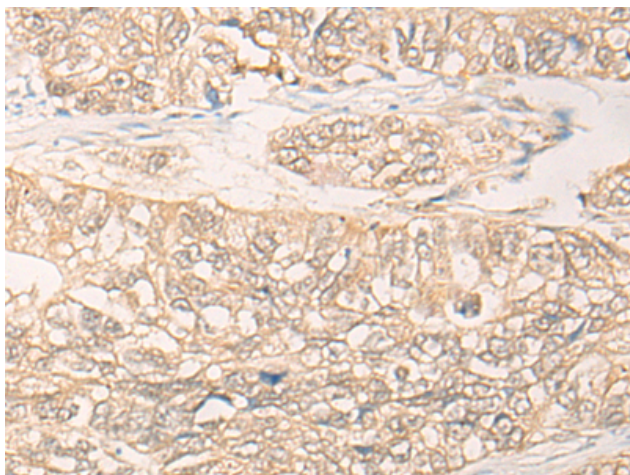
Purification: Antigen affinity purification

Species Reactivity: Human, Mouse, Rat

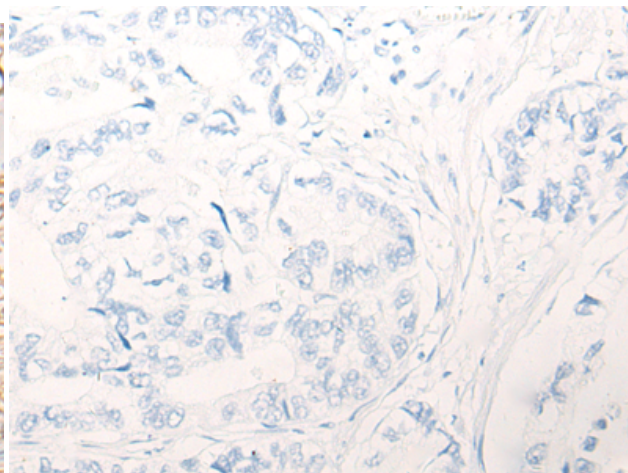
Constituents: PBS (without Mg²⁺ and Ca²⁺), pH 7.4, 150 mM NaCl, 0.05% Sodium Azide and 40% glycerol

Research Areas: Metabolism

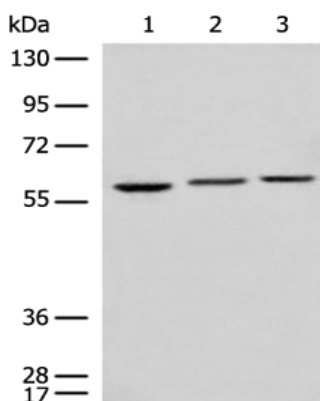
Storage & Shipping: Store at -20°C. Avoid repeated freezing and thawing



Immunohistochemistry analysis of paraffin embedded Human gastric cancer tissue using 218573(TKFC Antibody) at a dilution of 1/30(Nucleus).



In comparison with the IHC on the left, the same paraffin-embedded Human gastric cancer tissue is first treated with the fusion protein and then with 218573(Anti-TKFC Antibody) at dilution 1/30.



Gel: 8%SDS-PAGE, Lysate: 40 μ g;
 Lane 1-3: HeLa, A549 and 823 cell lysates;
 Primary antibody: 218573(TKFC Antibody) at dilution 1/700;
 Secondary antibody: Goat anti rabbit IgG at 1/8000 dilution;
 Exposure time: 5 seconds