

## TINAGL1 RABBIT PAB

**Cat.#:** S218178

**Product Name:** Anti-TINAGL1 Rabbit Polyclonal Antibody

**Synonyms:** ARG1; LCN7; LIECG3; TINAGRP

**UNIPROT ID:** Q9GZM7 (Gene Accession - BC009048 )

**Background:** The protein encoded by this gene is similar in sequence to tubulointerstitial nephritis antigen, a secreted glycoprotein that is recognized by antibodies in some types of immune-related tubulointerstitial nephritis. Three transcript variants encoding different isoforms have been found for this gene.

**Immunogen:** Fusion protein of human TINAGL1

**Applications:** ELISA, WB, IHC

**Recommended Dilutions:** IHC: 25-100;WB: 200-1000;ELISA: 5000-10000

**Host Species:** Rabbit

**Clonality:** Rabbit Polyclonal

**Isotype:** Immunogen-specific rabbit IgG

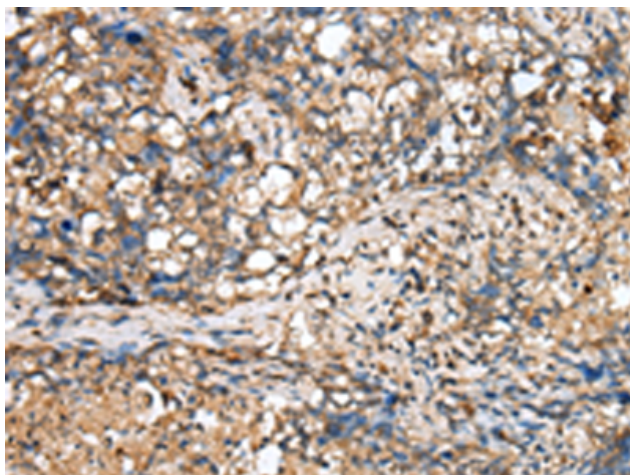
**Purification:** Antigen affinity purification

**Species Reactivity:** Human, Mouse, Rat

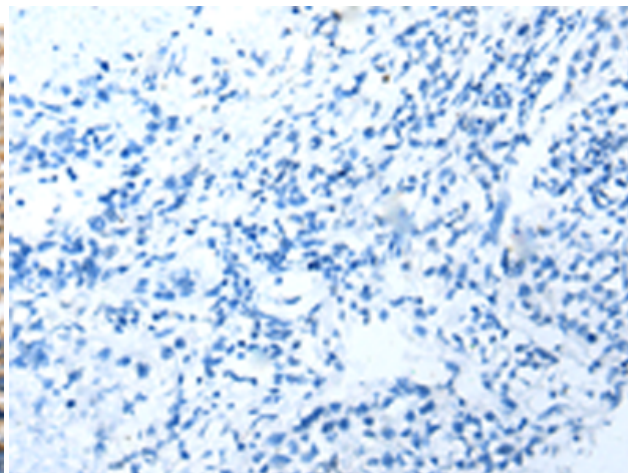
**Constituents:** PBS (without Mg<sup>2+</sup> and Ca<sup>2+</sup>), pH 7.4, 150 mM NaCl, 0.05% Sodium Azide and 40% glycerol

**Research Areas:** Signal Transduction

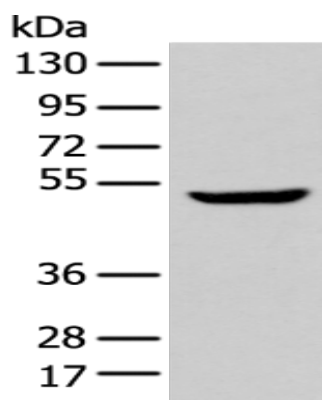
**Storage & Shipping:** Store at -20°C. Avoid repeated freezing and thawing



Immunohistochemistry analysis of paraffin embedded Human lung cancer tissue using 218178(TINAGLI Antibody) at a dilution of 1/25(Secreted).



In comparison with the IHC on the left, the same paraffin-embedded Human lung cancer tissue is first treated with the fusion protein and then with 218178(Anti-TINAGLI Antibody) at dilution 1/25.



Gel: 8%SDS-PAGE, Lysate: 40  $\mu$ g;  
Lane: Mouse liver tissue;  
Primary antibody: 218178(TINAGLI Antibody) at dilution 1/200;  
Secondary antibody: Goat anti rabbit IgG at 1/8000 dilution;  
Exposure time: 5 seconds