

TIMM44 RABBIT MAB

Cat.#: N262997

Product Name: Anti-TIMM44 Rabbit Monoclonal Antibody

Synonyms: TIM44

UNIPROT ID: O43615

Background: Essential component of the PAM complex, a complex required for the translocation of transit peptide-containing proteins from the inner membrane into the mitochondrial matrix in an ATP-dependent manner. Recruits mitochondrial HSP70 to drive protein translocation into the matrix using ATP as an energy source.

Immunogen: Recombinant protein of human TIMM44

Applications: WB, ICC/IF, IP

Recommended Dilutions: WB: 1/500-1/1000 IF: 1/50-1/200 IP: 1/20

Host Species: Rabbit

Clonality: Rabbit Monoclonal

Clone ID: R04-7H8

MW: Calculated MW: 51 kDa; Observed MW: 45 kDa

Isotype: IgG

Purification: Affinity Purified

Species Reactivity: Human

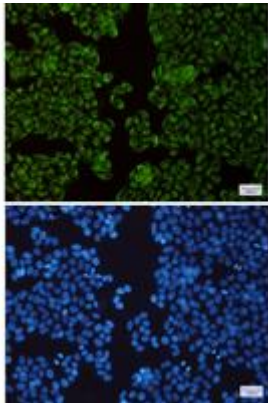
Conjugation: Unconjugated

Modification: Unmodified

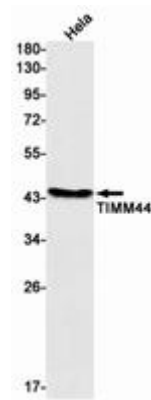
Constituents: PBS (without Mg²⁺ and Ca²⁺), pH 7.3 containing 50% glycerol, 0.5% BSA and 0.02% sodium azide

Research Areas: Endocrine & Metabolism

Storage & Shipping: Store at -20°C. Avoid repeated freezing and thawing



Immunocytochemistry analysis of TIMM44(green) in Hela using TIMM44 antibody, and DAPI(blue)



Western blot analysis of TIMM44 in Hela lysates using TIMM44 antibody.