

## TIM3(SABATOLIMAB) MAB

**Cat.#:** 28576

**Product Name:** Anti-TIM3(Sabatolimab) Monoclonal Antibody

**Synonyms:** HAVCR2, TIMD3

**Description:** Anti-TIM3(sabatolimab ) Monoclonal Antibody

**Background:** Research grade biosimilar. Not for use in therapeutic or diagnostic procedures for humans or animals.

**Applications:** ELISA, Flow Cyt

**Recommended Dilutions:** ELISA 1:5000-10000, Flow Cyt 1:100

**Host Species:** Humanized

**Isotype:** IgG4

**Purification:** Purified from cell culture supernatant by affinity chromatography

**Species Reactivity:** Human TIM3

**Constituents:** Lyophilized from sterile PBS, pH 7.4. 5 % – 8% trehalose is added as protectants before lyophilization.

**Storage & Shipping:** Store at  $-20^{\circ}\text{C}$  to  $-80^{\circ}\text{C}$  for 12 months in lyophilized form. After reconstitution, if not intended for use within a month, aliquot and store at  $-80^{\circ}\text{C}$  (Avoid repeated freezing and thawing).

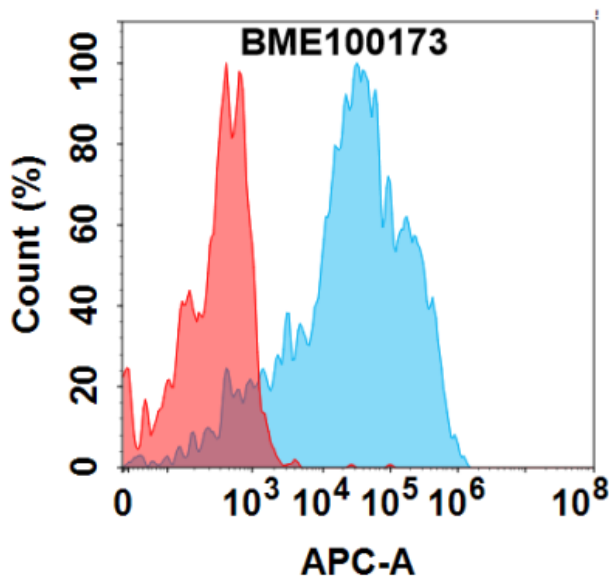


Figure 1. Flow cytometry analysis with  $1\mu\text{g}/\text{mL}$  Anti-TIM3(sabatolimab biosimilar) mAb (28576) on Expi293 cells transfected with Human TIM3 protein (Blue histogram) or Expi293 transfected with irrelevant protein (Red histogram).

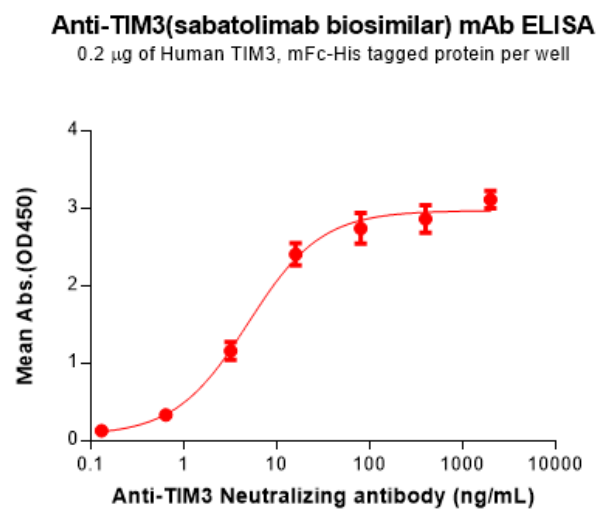


Figure 2. ELISA plate pre-coated by  $2\mu\text{g}/\text{mL}$  ( $100\mu\text{l}/\text{well}$ ) Human TIM3 Protein, mFc-His Tag(11158) can bind Anti-TIM3 (sabatolimab biosimilar) mAb(28576) in a linear range of 0.64-16 ng/mL.