

## THYMIDINE KINASE RABBIT PAB

**Cat.#:** N225773

**Product Name:** Anti-Thymidine Kinase Rabbit pAb

**Synonyms:** EC 2.7.1.21; KITH; TK-1; TK1; Thymidine kinase 1; cytosolic

**UNIPROT ID:** P04183

**Background:** TK is a cytosolic thymidine kinase. Phosphorylated during mitosis. Its enzymatic activity is high in proliferating cells and peaks during the S-phase of the cell cycle; it is very low in resting cells.

**Immunogen:** A synthesized peptide derived from human Thymidine Kinase 1

**Applications:** WB,IHC-P,ICC/IF,IP,FC

**Recommended Dilutions:** WB: 1/500-1/1000 IHC: 1/50-1/100 IF: 1/50-1/200 IP: 1/20 FC: 1/50-1/100

**Host Species:** Rabbit

**Clonality:** Rabbit Polyclonal

**Clone ID:** -

**MW:** Calculated MW: 25 kDa; Observed MW: 25 kDa

**Isotype:** IgG

**Purification:** Affinity Chromatography

**Species Reactivity:** Human

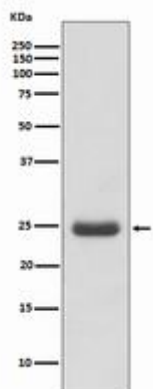
**Conjugation:** Unconjugated

**Modification:** Unmodified

**Constituents:** PBS (without Mg<sup>2+</sup> and Ca<sup>2+</sup>), pH 7.3 containing 50% glycerol, 0.5% BSA and 0.02% sodium azide

**Research Areas:** Epigenetics and Nuclear Signaling

**Storage & Shipping:** Store at -20°C. Avoid repeated freezing and thawing



Western blot analysis of Thymidine Kinase 1 in Molt4 lysates using Thymidine Kinase antibody.