

## THY1 RABBIT PAB

**Cat.#:** S220233

**Product Name:** Anti-THY1 Rabbit Polyclonal Antibody

**Synonyms:** CD90; CDw90

**UNIPROT ID:** P04216 (Gene Accession - NP\_006279 )

**Background:** This gene encodes a cell surface glycoprotein and member of the immunoglobulin superfamily of proteins. The encoded protein is involved in cell adhesion and cell communication in numerous cell types, but particularly in cells of the immune and nervous systems. The encoded protein is widely used as a marker for hematopoietic stem cells. This gene may function as a tumor suppressor in nasopharyngeal carcinoma. Alternative splicing results in multiple transcript variants.

**Immunogen:** Synthetic peptide of human THY1

**Applications:** ELISA, IHC

**Recommended Dilutions:** IHC: 25-100; ELISA: 2000-5000

**Host Species:** Rabbit

**Clonality:** Rabbit Polyclonal

**Isotype:** Immunogen-specific rabbit IgG

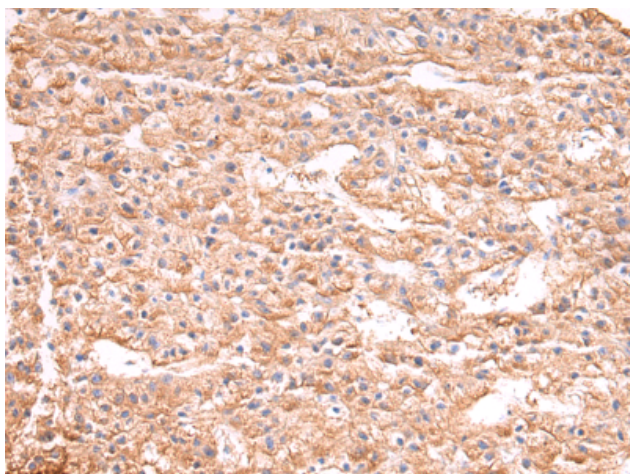
**Purification:** Antigen affinity purification

**Species Reactivity:** Human


**Constituents:** PBS (without Mg<sup>2+</sup> and Ca<sup>2+</sup>), pH 7.4, 150 mM NaCl, 0.05% Sodium Azide and 40% glycerol

**Research Areas:** Neuroscience, Immunology, Stem Cells

**Storage & Shipping:** Store at -20°C. Avoid repeated freezing and thawing



Immunohistochemistry analysis of paraffin-embedded Human prostate cancer tissue using 220233(THY1 Antibody) at a dilution of 1/25(Cytoplasm).

 Immunohistochemistry analysis of paraffin-embedded Human liver cancer tissue using 220233(Anti-THY1 Antibody) at a dilution of 1/25.