

THOC5 RABBIT PAB

Cat.#: S216194

Product Name: Anti-THOC5 Rabbit Polyclonal Antibody

Synonyms: Fmip; PK1.3; fSAP79; C22orf19

UNIPROT ID: Q13769 (Gene Accession - NP_003669)

Background: Predicted to enable mRNA binding activity. Involved in several processes, including monocyte differentiation; negative regulation of DNA damage checkpoint; and viral mRNA export from host cell nucleus. Located in nucleoplasm. Part of THO complex part of transcription export complex. Colocalizes with chromosome, telomeric region. Implicated in breast carcinoma.

Immunogen: Synthetic peptide of human THOC5

Applications: ELISA, IHC

Recommended Dilutions: IHC: 50-200; ELISA: 1000-2000

Host Species: Rabbit

Clonality: Rabbit Polyclonal

Isotype: Immunogen-specific rabbit IgG

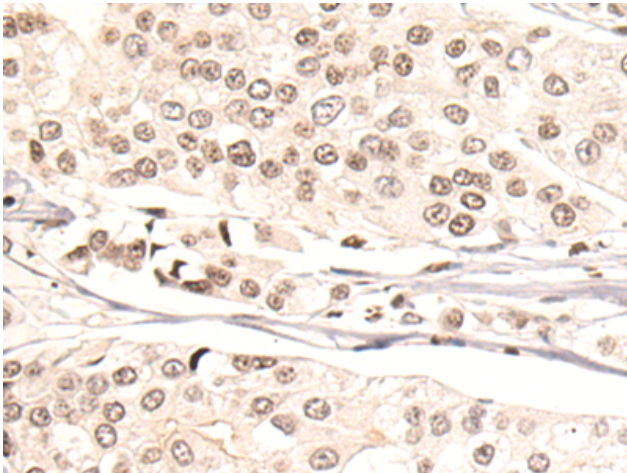
Purification: Antigen affinity purification

Species Reactivity: Human, Mouse, Rat

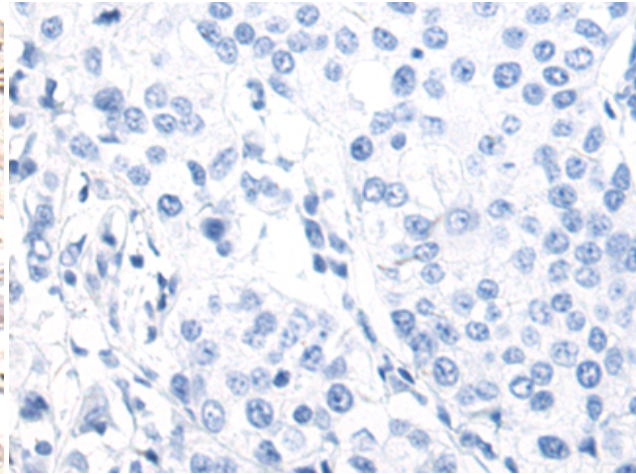
Constituents: PBS (without Mg²⁺ and Ca²⁺), pH 7.4, 150 mM NaCl, 0.05% Sodium Azide and 40% glycerol

Research Areas: Immunology

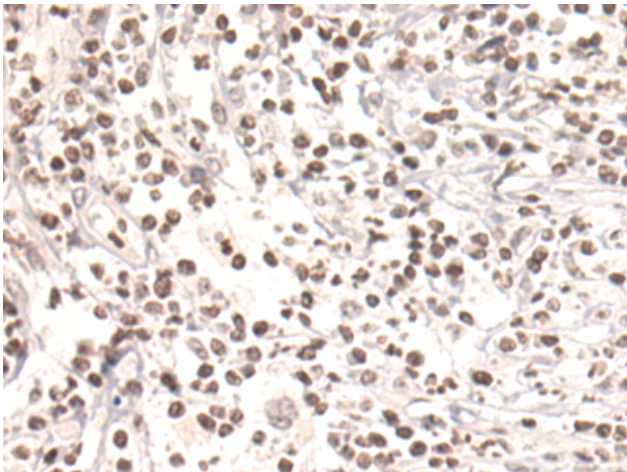
Storage & Shipping: Store at -20°C. Avoid repeated freezing and thawing



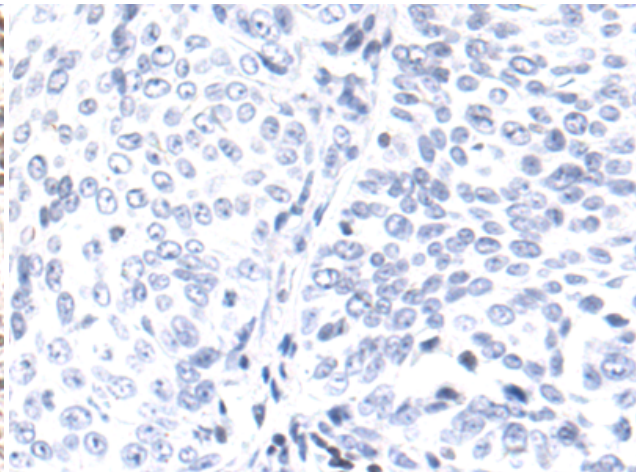
Immunohistochemistry analysis of paraffin embedded Human breast cancer tissue using 216194(THOC5 Antibody) at a dilution of 1/50(Nucleus).



In comparison with the IHC on the left, the same paraffin-embedded Human breast cancer tissue is first treated with the synthetic peptide and then with 216194(Anti-THOC5 Antibody) at dilution 1/50.



The image on the left is immunohistochemistry of paraffin-embedded Human bladder cancer tissue using 216194(Anti-THOC5 Antibody) at a dilution of 1/50.



In comparison with the IHC on the left, the same paraffin-embedded Human bladder cancer tissue is first treated with synthetic peptide and then with D164608(Anti-THOC5 Antibody) at dilution 1/50.