

THOC3 RABBIT PAB

Cat.#: S219346

Product Name: Anti-THOC3 Rabbit Polyclonal Antibody

Synonyms: THO3; hTREX45

UNIPROT ID: Q96J01 (Gene Accession - BC006849)

Background: This gene encodes a component of the nuclear THO transcription elongation complex, which is part of the larger transcription export (TREX) complex that couples messenger RNA processing and export. In humans, the transcription export complex is recruited to the 5'-end of messenger RNAs in a splicing- and cap-dependent manner. Studies of a related complex in mouse suggest that the metazoan transcription export complex is involved in cell differentiation and development. A pseudogene of this gene has been defined on chromosome 5.

Immunogen: Fusion protein of human THOC3

Applications: ELISA, WB, IHC

Recommended Dilutions: IHC: 50-200;WB: 1000-5000;ELISA: 5000-10000

Host Species: Rabbit

Clonality: Rabbit Polyclonal

Isotype: Immunogen-specific rabbit IgG

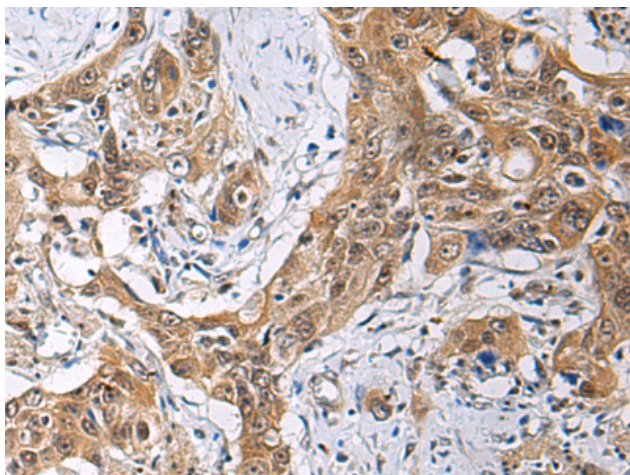
Purification: Antigen affinity purification

Species Reactivity: Human, Mouse

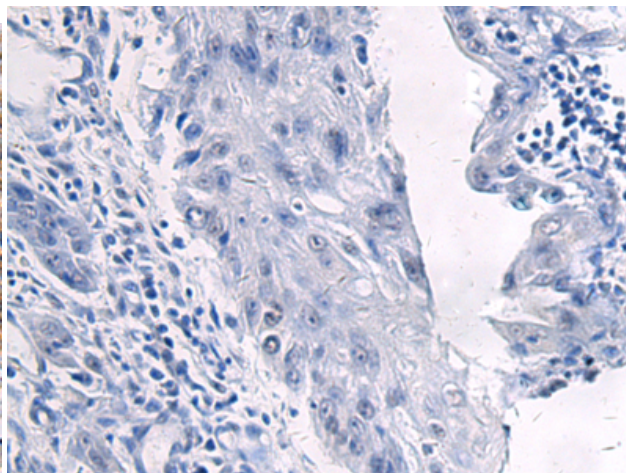
Constituents: PBS (without Mg²⁺ and Ca²⁺), pH 7.4, 150 mM NaCl, 0.05% Sodium Azide and 40% glycerol

Research Areas: Epigenetics and Nuclear Signaling

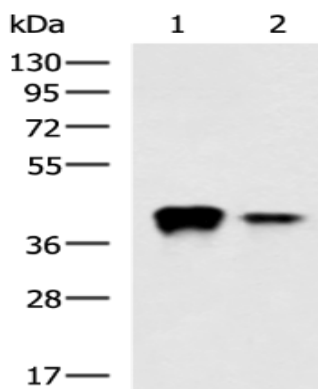
Storage & Shipping: Store at -20°C. Avoid repeated freezing and thawing



Immunohistochemistry analysis of paraffin embedded Human esophagus cancer tissue using 219346(THOC3 Antibody) at a dilution of 1/85(Cytoplasm and Nucleus).



In comparison with the IHC on the left, the same paraffin-embedded Human esophagus cancer tissue is first treated with the fusion protein and then with 219346(Anti-THOC3 Antibody) at dilution 1/85.



Gel: 8%SDS-PAGE, Lysate: 40 μ g;
Lane 1-2: Jurkat and PC3 cell lysates;
Primary antibody: 219346(THOC3 Antibody) at dilution 1/1600;
Secondary antibody: HRP-conjugated Goat anti rabbit IgG at 1/5000 dilution;
Exposure time: 5 minutes