

THIOREDOXIN RABBIT MAB

Cat.#: N261628

Product Name: Anti-Thioredoxin Rabbit Monoclonal Antibody

Synonyms: TXN; ADF; ATL-derived factor; SASP; Thioredoxin; TRX1; Thioredoxin delta 3; TRX; TXN delta 3; TRDX

UNIPROT ID: P10599

Background: Thioredoxin (Trx) is a redox protein that is found in several species, such as bacteria, plants and mammals, and contains a conserved active site, consisting of Trp-Cys-Gly-Pro-Cys. Participates in many cellular processes including redox signaling, response to oxidative stress, and protein reduction

Immunogen: A synthetic peptide of human Thioredoxin/TRX

Applications: WB,IHC-F,IHC-P,ICC/IF,IP

Recommended Dilutions: WB: 1/1000-1/10000 IHC: 1/50-1/200 IF: 1/100-1/500
IP: 1/20

Host Species: Rabbit

Clonality: Rabbit Monoclonal

Clone ID: R07-4H5

MW: Calculated MW: 12 kDa; Observed MW: 12 kDa

Isotype: IgG

Purification: Affinity Purified

Species Reactivity: Human

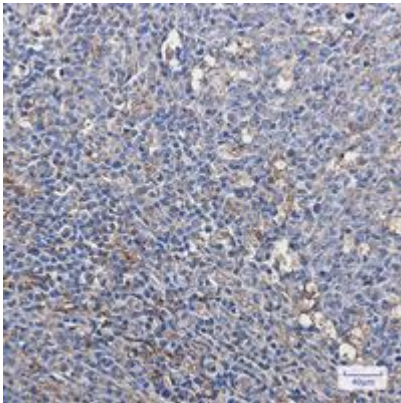
Conjugation: Unconjugated

Modification: Unmodified

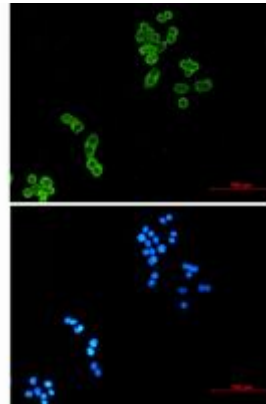
Constituents: PBS (without Mg²⁺ and Ca²⁺), pH 7.3 containing 50% glycerol, 0.5% BSA and 0.02% sodium azide

Research Areas: Tags & Cell Markers

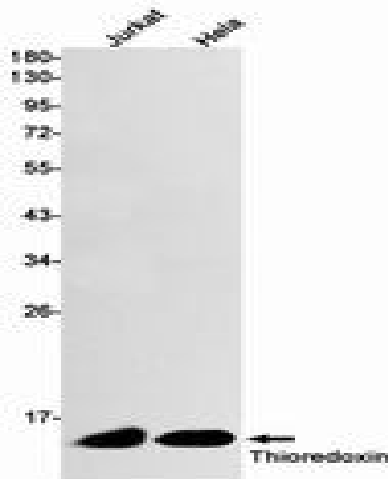
Storage & Shipping: Store at -20°C. Avoid repeated freezing and thawing



Immunohistochemistry analysis of paraffin-embedded Human tonsil using Thioredoxin/TRX antibody. High-pressure and temperature Sodium Citrate pH 6.0 was used for antigen retrieval.



Immunocytochemistry analysis of Thioredoxin (green) in Hela using Thioredoxin antibody, and DAPI (blue).



Western blot analysis of Thioredoxin in Jurkat, Hela lysates using Thioredoxin antibody.