

TGM7 RABBIT PAB

Cat.#: S214821

Product Name: Anti-TGM7 Rabbit Polyclonal Antibody

Synonyms: TGMZ

UNIPROT ID: Q96PF1 (Gene Accession - NP_443187)

Background: Transglutaminases (TGM; EC 2.3.2.13) are a family of structurally and functionally related enzymes that stabilize protein assemblies through the formation of gamma-glutamyl-epsilon lysine crosslinks. For additional background information on transglutaminases, see TGM1 (MIM 190195).

Immunogen: Synthetic peptide of human TGM7

Applications: ELISA, IHC

Recommended Dilutions: IHC: 25-100; ELISA: 2000-5000

Host Species: Rabbit

Clonality: Rabbit Polyclonal

Isotype: Immunogen-specific rabbit IgG

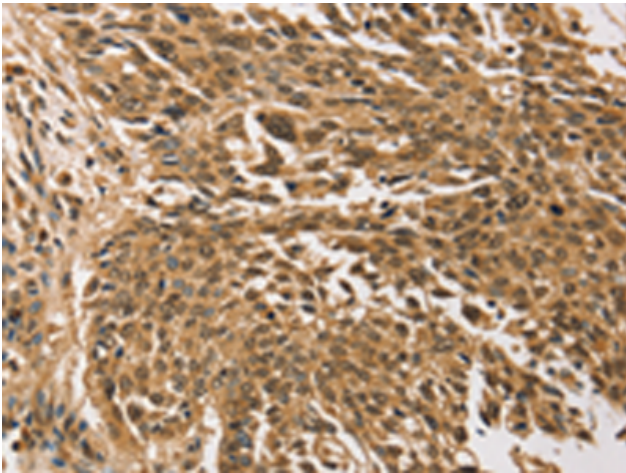
Purification: Antigen affinity purification

Species Reactivity: Human

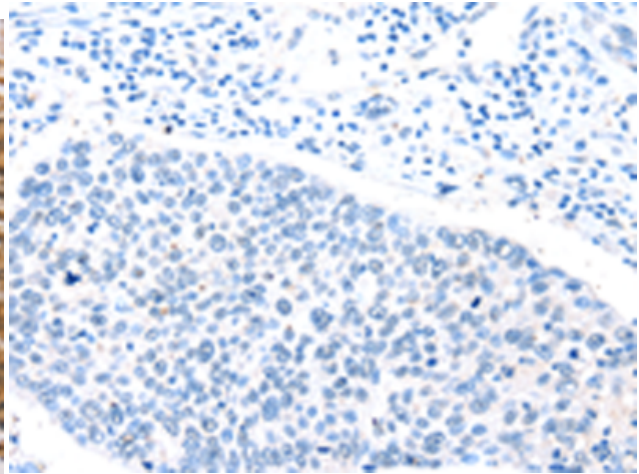
Constituents: PBS (without Mg²⁺ and Ca²⁺), pH 7.4, 150 mM NaCl, 0.05% Sodium Azide and 40% glycerol

Research Areas: Metabolism, Signal Transduction

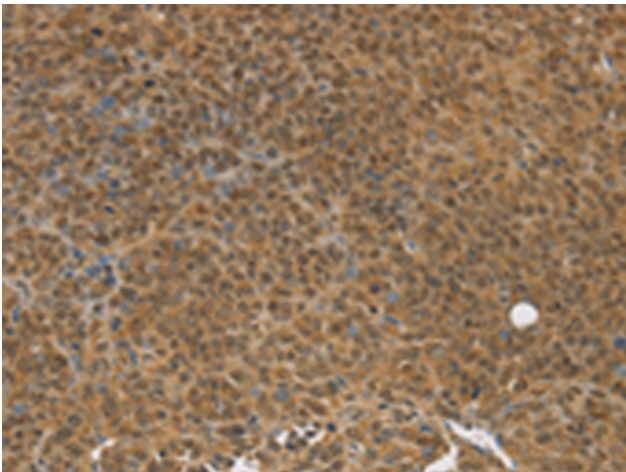
Storage & Shipping: Store at -20°C. Avoid repeated freezing and thawing



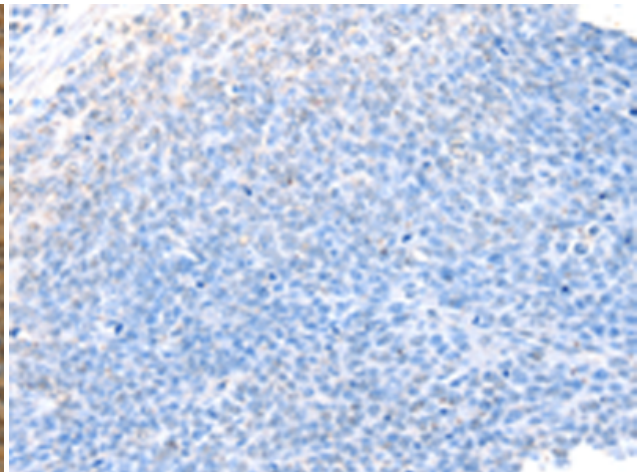
Immunohistochemistry analysis of paraffin embedded Human lung cancer tissue using 214821(TGM7 Antibody) at a dilution of 1/30(Nucleus).



In comparison with the IHC on the left, the same paraffin-embedded Human lung cancer tissue is first treated with the synthetic peptide and then with 214821(Anti-TGM7 Antibody) at dilution 1/30.



The image on the left is immunohistochemistry of paraffin-embedded Human ovarian cancer tissue using 214821(Anti-TGM7 Antibody) at a dilution of 1/30.



In comparison with the IHC on the left, the same paraffin-embedded Human ovarian cancer tissue is first treated with synthetic peptide and then with D162406(Anti-TGM7 Antibody) at dilution 1/30.