

## TGM3 RABBIT PAB

**Cat.#:** S216834

**Product Name:** Anti-TGM3 Rabbit Polyclonal Antibody

**Synonyms:** TGE; UHS2

**UNIPROT ID:** Q08188 (Gene Accession - BC109076 )

**Background:** Transglutaminases are enzymes that catalyze the crosslinking of proteins by epsilon-gamma glutamyl lysine isopeptide bonds. While the primary structure of transglutaminases is not conserved, they all have the same amino acid sequence at their active sites and their activity is calcium-dependent. The protein encoded by this gene consists of two polypeptide chains activated from a single precursor protein by proteolysis. The encoded protein is involved in the later stages of cell envelope formation in the epidermis and hair follicle.

**Immunogen:** Fusion protein of human TGM3

**Applications:** ELISA, WB, IHC

**Recommended Dilutions:** IHC: 50- 200;WB: 1000-5000;ELISA: 5000-10000

**Host Species:** Rabbit

**Clonality:** Rabbit Polyclonal

**Isotype:** Immunogen-specific rabbit IgG

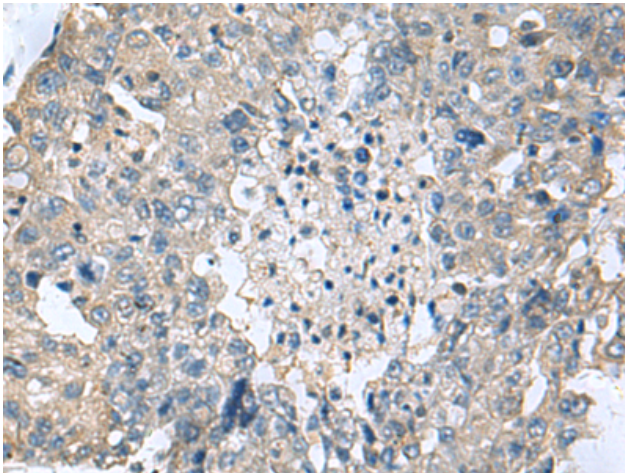
**Purification:** Antigen affinity purification

**Species Reactivity:** Human

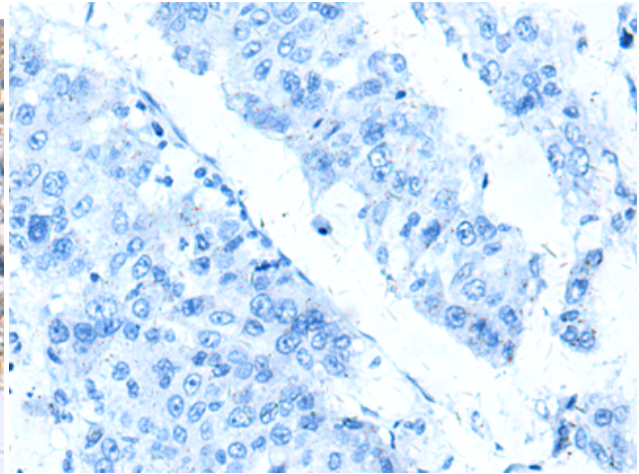
**Constituents:** PBS (without Mg<sup>2+</sup> and Ca<sup>2+</sup>), pH 7.4, 150 mM NaCl, 0.05% Sodium Azide and 40% glycerol

**Research Areas:** Metabolism, Signal Transduction

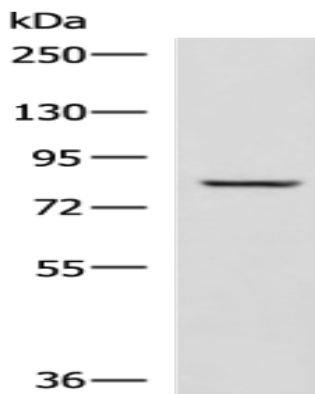
**Storage & Shipping:** Store at -20°C. Avoid repeated freezing and thawing



Immunohistochemistry analysis of paraffin embedded Human liver cancer tissue using 216834(TGM3 Antibody) at a dilution of 1/55(Cytoplasm).



In comparison with the IHC on the left, the same paraffin-embedded Human liver cancer tissue is first treated with the fusion protein and then with 216834(Anti-TGM3 Antibody) at dilution 1/55.



Gel: 6%SDS-PAGE, Lysate: 40  $\mu$ g;  
Lane: Human tongue tissue lysate;  
Primary antibody: 216834(TGM3 Antibody) at dilution 1/800;  
Secondary antibody: HRP-conjugated Goat anti rabbit IgG at 1/5000 dilution;  
Exposure time: 30 seconds