

## TGM2 RABBIT PAB

**Cat.#:** S216833

**Product Name:** Anti-TGM2 Rabbit Polyclonal Antibody

**Synonyms:** transglutaminase 2

**UNIPROT ID:** TGC; tTG; G(h); hTG2; TG(C) (Gene Accession - P21980 )

**Background:** BC003551

**Immunogen:** Fusion protein of human TGM2

**Applications:** ELISA, WB, IHC

**Recommended Dilutions:** IHC: 25-100;WB: 200-1000;ELISA: 1000-2000

**Host Species:** Rabbit

**Clonality:** Rabbit Polyclonal

**Isotype:** Immunogen-specific rabbit IgG

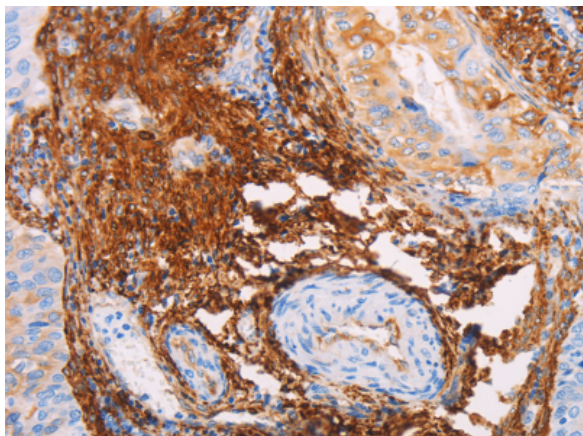
**Purification:** Antigen affinity purification

**Species Reactivity:** Human, Mouse

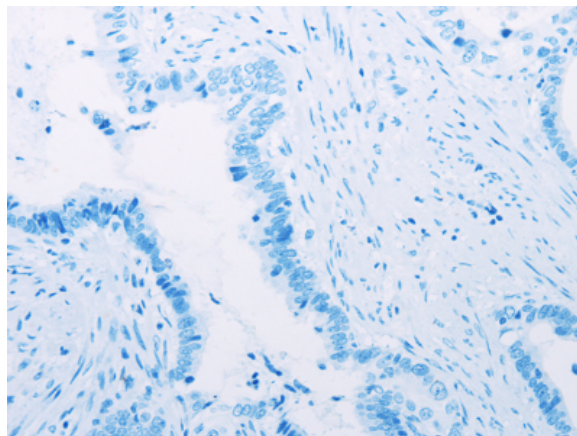
**Constituents:** PBS (without Mg<sup>2+</sup> and Ca<sup>2+</sup>), pH 7.4, 150 mM NaCl, 0.05% Sodium Azide and 40% glycerol

**Research Areas:** Metabolism, Signal Transduction, Cancer, Immunology

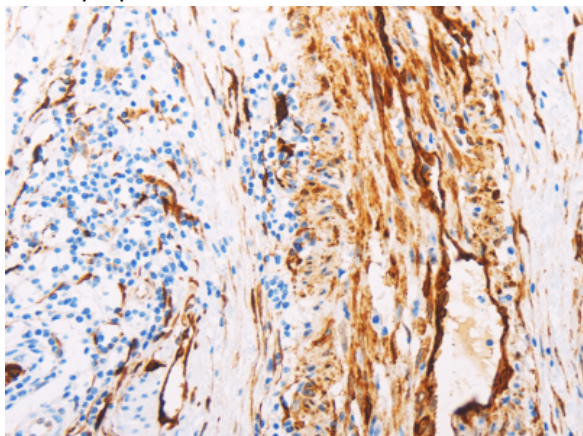
**Storage & Shipping:** Store at -20°C. Avoid repeated freezing and thawing



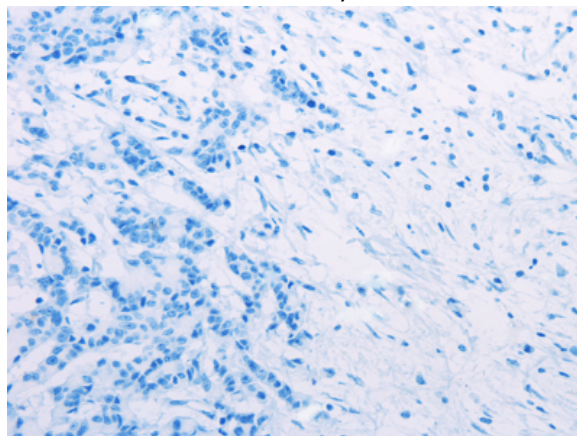
Immunohistochemistry analysis of paraffin embedded Human cervical cancer tissue using 216833(TGM2 Antibody) at a dilution of 1/15(Cytoplasm).



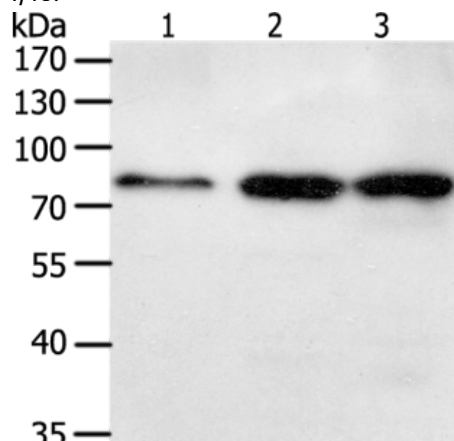
In comparison with the IHC on the left, the same paraffin-embedded Human cervical cancer tissue is first treated with the fusion protein and then with 216833(Anti-TGM2 Antibody) at dilution 1/15.



The image on the left is immunohistochemistry of paraffin-embedded Human colon cancer tissue using 216833(Anti-TGM2 Antibody) at a dilution of 1/15.



In comparison with the IHC on the left, the same paraffin-embedded Human colon cancer tissue is first treated with fusion protein and then with D221329(Anti-TGM2 Antibody) at dilution 1/15.



Gel: 10%SDS-PAGE, Lysate: 50 µg;  
Lane 1-3: Lovo cells, hela cells, human liver cancer tissue;  
Primary antibody: 216833(TGM2 Antibody) at dilution 1/150;  
Secondary antibody: Goat anti rabbit IgG at 1/8000 dilution;  
Exposure time: 1 minute



# Product Description

Pioneering GTPase and Oncogene Product Development since 2010

---