

TGFB1 RABBIT PAB

Cat.#: S216831

Product Name: Anti-TGFB1 Rabbit Polyclonal Antibody

Synonyms: CED; LAP; DPD1; TGFB; IBDIMDE; TGFbeta; TGF-beta1

UNIPROT ID: P01137 (Gene Accession - BC000125)

Background: This gene encodes a secreted ligand of the TGF-beta (transforming growth factor-beta) superfamily of proteins. Ligands of this family bind various TGF-beta receptors leading to recruitment and activation of SMAD family transcription factors that regulate gene expression. The encoded preproprotein is proteolytically processed to generate a latency-associated peptide (LAP) and a mature peptide, and is found in either a latent form composed of a mature peptide homodimer, a LAP homodimer, and a latent TGF-beta binding protein, or in an active form consisting solely of the mature peptide homodimer. The mature peptide may also form heterodimers with other TGFB family members. This encoded protein regulates cell proliferation, differentiation and growth, and can modulate expression and activation of other growth factors including interferon gamma and tumor necrosis factor alpha. This gene is frequently upregulated in tumor cells, and mutations in this gene result in Camurati-Engelmann disease.

Immunogen: Fusion protein of human TGFB1

Applications: ELISA, WB, IHC

Recommended Dilutions: IHC: 150-300;WB: 500-2000;ELISA: 5000-10000

Host Species: Rabbit

Clonality: Rabbit Polyclonal

Isotype: Immunogen-specific rabbit IgG

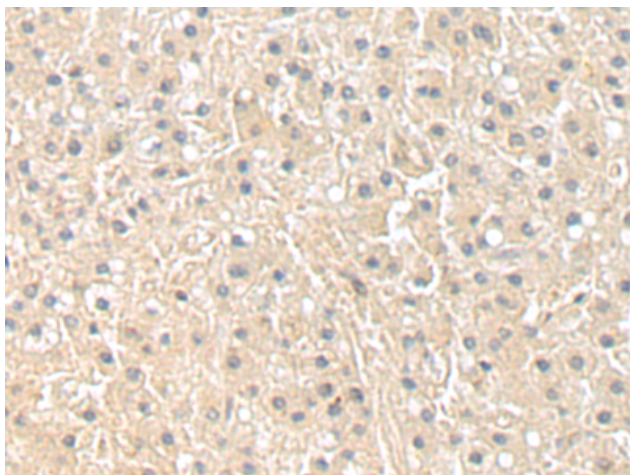
Purification: Antigen affinity purification

Species Reactivity: Human, Mouse, Rat

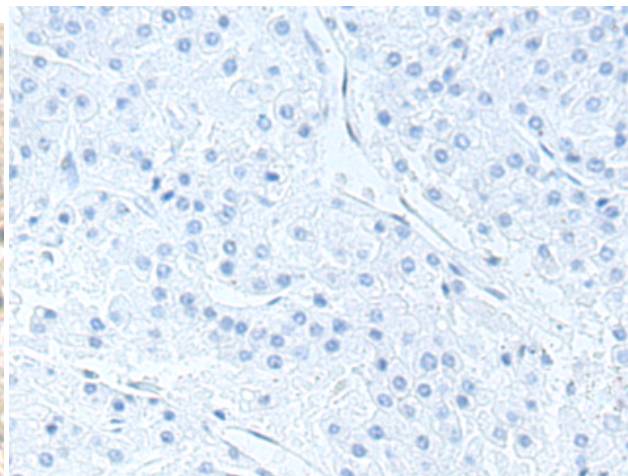
Constituents: PBS (without Mg²⁺ and Ca²⁺), pH 7.4, 150 mM NaCl, 0.05% Sodium Azide and 40% glycerol

Research Areas: Signal Transduction, Cardiovascular, Cancer, Metabolism

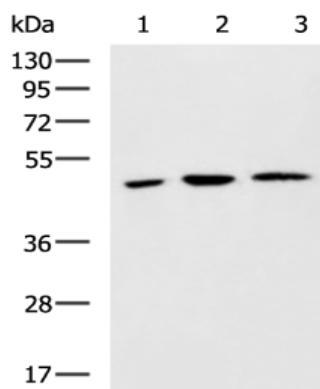
Storage & Shipping: Store at -20°C. Avoid repeated freezing and thawing



Immunohistochemistry analysis of paraffin embedded Human liver cancer tissue using 216831(TGFBI Antibody) at a dilution of 1/100(Secreted).



In comparison with the IHC on the left, the same paraffin-embedded Human liver cancer tissue is first treated with the fusion protein and then with 216831(Anti-TGFBI Antibody) at dilution 1/100.



Gel: 8%SDS-PAGE, Lysate: 40 μ g;
Lane 1-3: K562, NIH/3T3 and Hela cell lysates;
Primary antibody: 216831(TGFBI Antibody) at dilution 1/550;
Secondary antibody: HRP-conjugated Goat anti rabbit IgG at 1/5000 dilution;
Exposure time: 1 minute