

TF RABBIT PAB

Cat.#: S219652

Product Name: Anti-TF Rabbit Polyclonal Antibody

Synonyms: TFQTL1; PRO1557; PRO2086; HEL-S-71p

UNIPROT ID: P02787 (Gene Accession - NP_001054)

Background: This gene encodes a glycoprotein with an approximate molecular weight of 76.5 kDa. It is thought to have been created as a result of an ancient gene duplication event that led to generation of homologous C and N-terminal domains each of which binds one ion of ferric iron. The function of this protein is to transport iron from the intestine, reticuloendothelial system, and liver parenchymal cells to all proliferating cells in the body. This protein may also have a physiologic role as granulocyte/pollen-binding protein (GPBP) involved in the removal of certain organic matter and allergens from serum.

Immunogen: Synthetic peptide of human TF

Applications: ELISA, WB, IHC

Recommended Dilutions: IHC: 50-200;WB: 1000-5000;ELISA: 5000-10000

Host Species: Rabbit

Clonality: Rabbit Polyclonal

Isotype: Immunogen-specific rabbit IgG

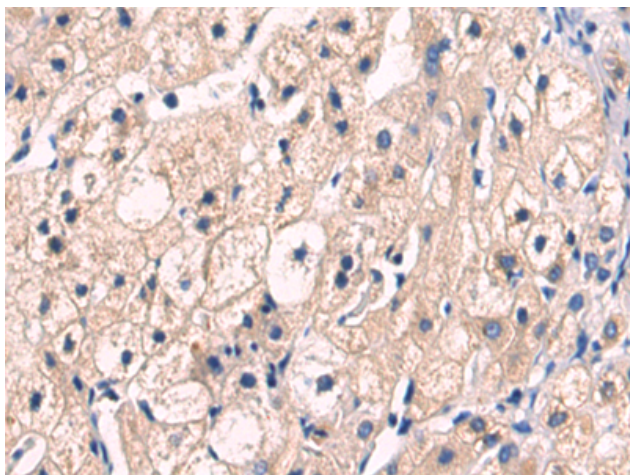
Purification: Antigen affinity purification

Species Reactivity: Human

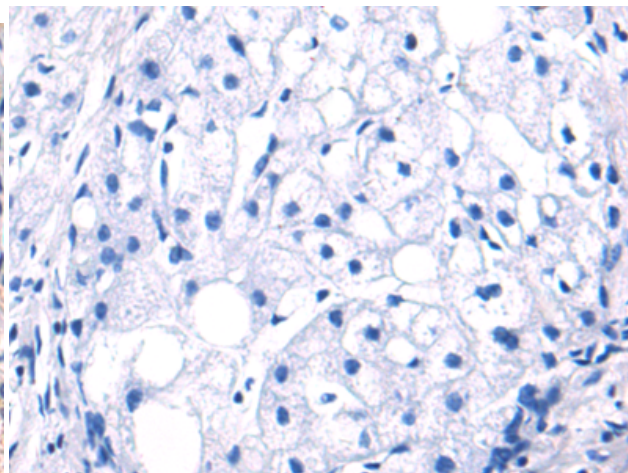
Constituents: PBS (without Mg²⁺ and Ca²⁺), pH 7.4, 150 mM NaCl, 0.05% Sodium Azide and 40% glycerol

Research Areas: Cardiovascular, Signal Transduction

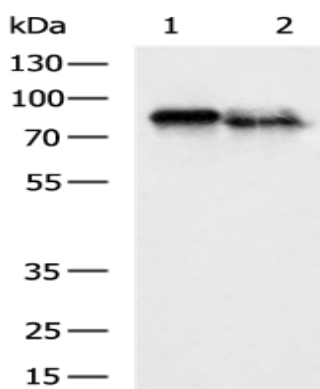
Storage & Shipping: Store at -20°C. Avoid repeated freezing and thawing



Immunohistochemistry analysis of paraffin embedded Human liver cancer tissue using 219652(TF Antibody) at a dilution of 1/50(Cytoplasm).



In comparison with the IHC on the left, the same paraffin-embedded Human liver cancer tissue is first treated with the synthetic peptide and then with 219652(Anti-TF Antibody) at dilution 1/50.



Gel: 8%SDS-PAGE, Lysate: 40 μ g;
Lane 1-2: Human prostate tissue, HepG2 cell lysates;
Primary antibody: 219652(TF Antibody) at dilution 1/650;
Secondary antibody: HRP-conjugated Goat anti rabbit IgG at 1/5000 dilution;
Exposure time: 10 seconds