

TETRANECTIN RABBIT MAB

Cat.#: N262988

Product Name: Anti-Tetranectin Rabbit Monoclonal Antibody

Synonyms: Clec3b; Tetranectin; TN; TNA

UNIPROT ID: P05452

Background: Tetranectin binds to plasminogen and to isolated kringle 4. May be involved in the packaging of molecules destined for exocytosis.

Immunogen: A synthetic peptide of human Tetranectin

Applications: WB,IHC-P,IP

Recommended Dilutions: WB: 1/500-1/1000 IHC: 1/50-1/100 IP: 1/20

Host Species: Rabbit

Clonality: Rabbit Monoclonal

Clone ID: R08-412

MW: Calculated MW: 23 kDa; Observed MW: 23 kDa

Isotype: IgG

Purification: Affinity Purified

Species Reactivity: Human,Mouse

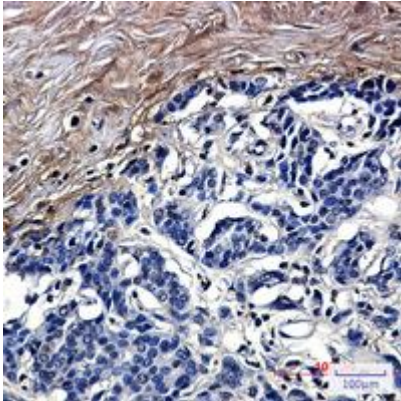
Conjugation: Unconjugated

Modification: Unmodified

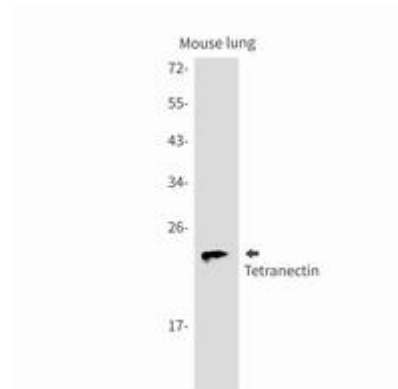
Constituents: PBS (without Mg²⁺ and Ca²⁺), pH 7.3 containing 50% glycerol, 0.5% BSA and 0.02% sodium azide

Research Areas: Cardiovascular

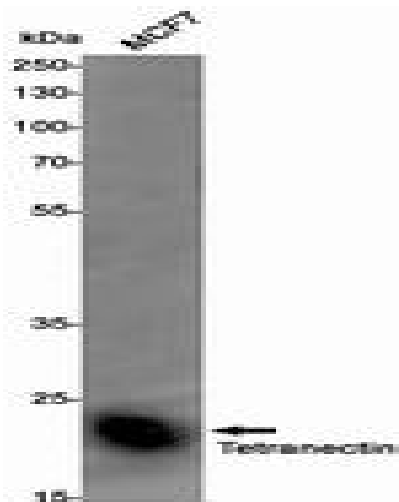
Storage & Shipping: Store at -20°C. Avoid repeated freezing and thawing



Immunohistochemistry analysis of paraffin-embedded Human breast cancer using Tetraneectin antibody. High-pressure and temperature Sodium Citrate pH 6.0 was used for antigen retrieval.



Western blot analysis of Tetraneectin in mouse lung lysates using Tetraneectin antibody.



Western blot analysis of Tetraneectin in MCF-7 lysates using Tetraneectin antibody.