

TEP1 RABBIT PAB

Cat.#: S220227

Product Name: Anti-TEP1 Rabbit Polyclonal Antibody

Synonyms: TPI; TLPI; p240; TROVE1; VAULT2

UNIPROT ID: Q99973 (Gene Accession - NP_009041)

Background: This gene product is a component of the ribonucleoprotein complex responsible for telomerase activity which catalyzes the addition of new telomeres on the chromosome ends. The telomerase-associated proteins are conserved from ciliates to humans.

Immunogen: Synthetic peptide of human TEP1

Applications: ELISA, IHC

Recommended Dilutions: IHC: 50-200; ELISA: 3000-10000

Host Species: Rabbit

Clonality: Rabbit Polyclonal

Isotype: Immunogen-specific rabbit IgG

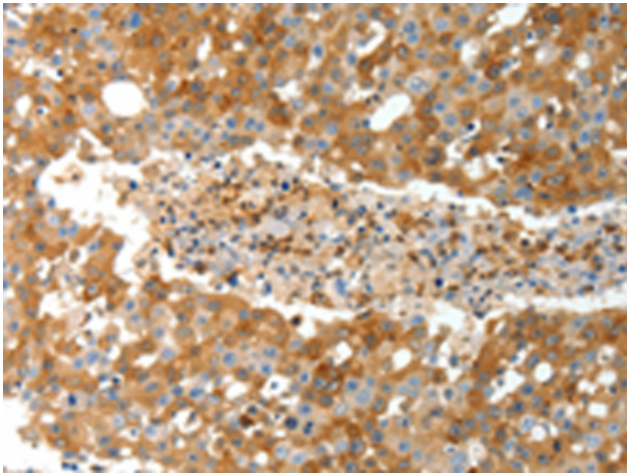
Purification: Antigen affinity purification

Species Reactivity: Human

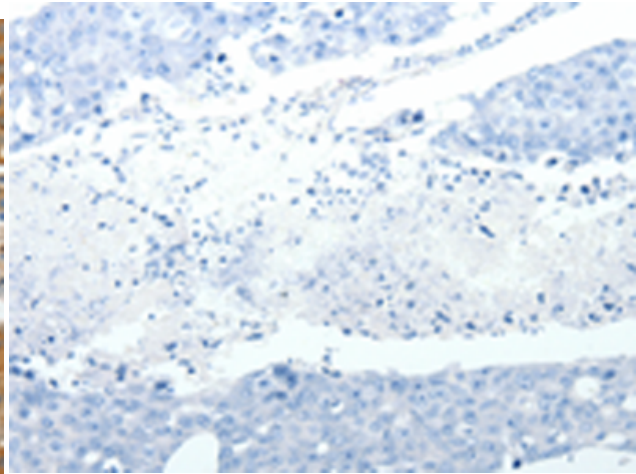
Constituents: PBS (without Mg²⁺ and Ca²⁺), pH 7.4, 150 mM NaCl, 0.05% Sodium Azide and 40% glycerol

Research Areas: Epigenetics and Nuclear Signaling

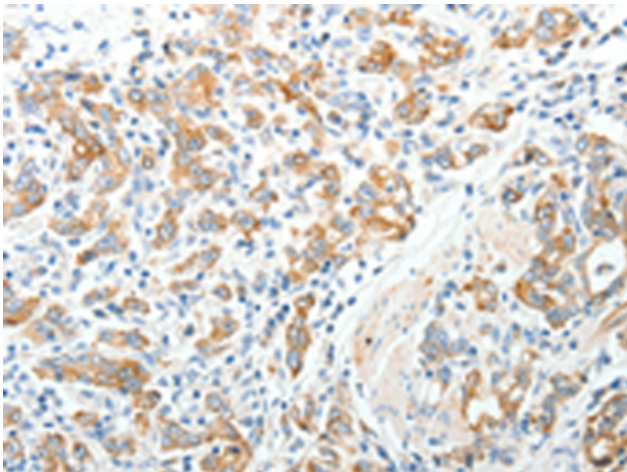
Storage & Shipping: Store at -20°C. Avoid repeated freezing and thawing



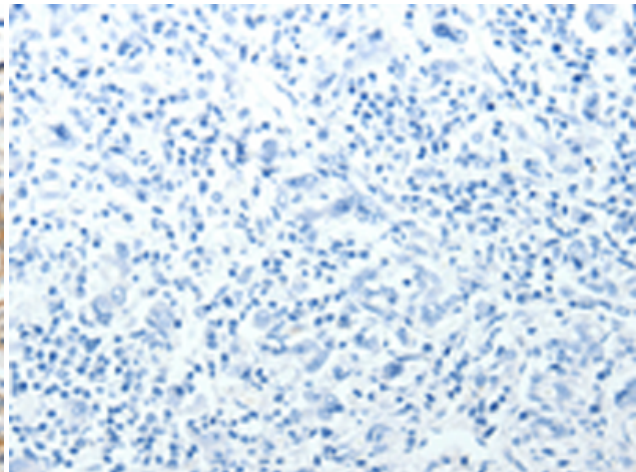
Immunohistochemistry analysis of paraffin embedded Human breast cancer tissue using 220227(TEP1 Antibody) at a dilution of 1/40(Cytoplasm).



In comparison with the IHC on the left, the same paraffin-embedded Human breast cancer tissue is first treated with the synthetic peptide and then with 220227(Anti-TEP1 Antibody) at dilution 1/40.



The image on the left is immunohistochemistry of paraffin-embedded Human gastric cancer tissue using 220227(Anti-TEP1 Antibody) at a dilution of 1/40.



In comparison with the IHC on the left, the same paraffin-embedded Human gastric cancer tissue is first treated with synthetic peptide and then with D261168(Anti-TEP1 Antibody) at dilution 1/40.