

## TEKT4 RABBIT PAB

**Cat.#:** S216835

**Product Name:** Anti-TEKT4 Rabbit Polyclonal Antibody

**Synonyms:**

**UNIPROT ID:** Q8WW24 (Gene Accession - BC021716 )

**Background:** Tektin 4, also known as TEKT4, is a 435 amino acid protein belonging to the tektin family. Localizing to cytoplasm as well as haploid round spermatids in testis, Tektin 4 is expressed in the abaxial surface of outer dense fibers (ORFs) in sperm flagella. Deletion of Tektin 4 is associated with uncoordinated waveform propagation and reduced velocity of sperm flagellum, resulting in subfertility.

**Immunogen:** Fusion protein of human TEKT4

**Applications:** ELISA, WB, IHC

**Recommended Dilutions:** IHC: 25-100;WB: 500-2000;ELISA: 2000-5000

**Host Species:** Rabbit

**Clonality:** Rabbit Polyclonal

**Isotype:** Immunogen-specific rabbit IgG

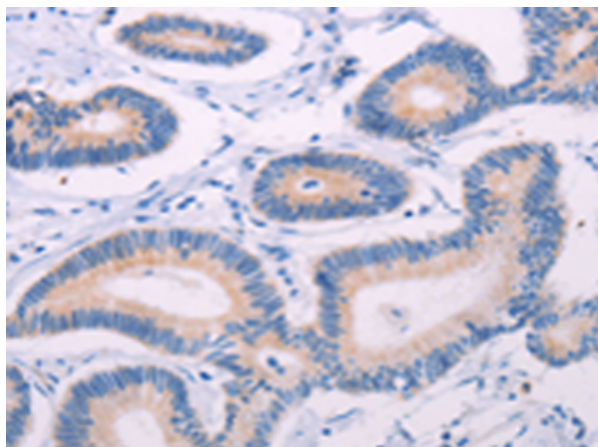
**Purification:** Antigen affinity purification

**Species Reactivity:** Human

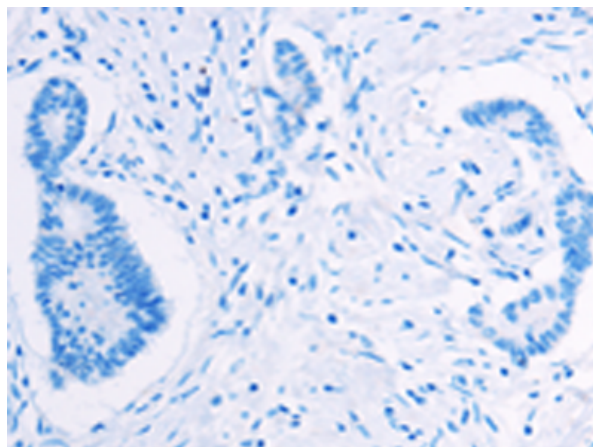
**Constituents:** PBS (without Mg<sup>2+</sup> and Ca<sup>2+</sup>), pH 7.4, 150 mM NaCl, 0.05% Sodium Azide and 40% glycerol

**Research Areas:** Signal Transduction

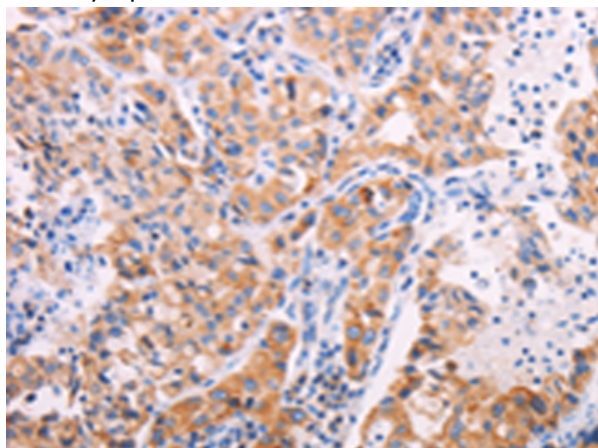
**Storage & Shipping:** Store at -20°C. Avoid repeated freezing and thawing



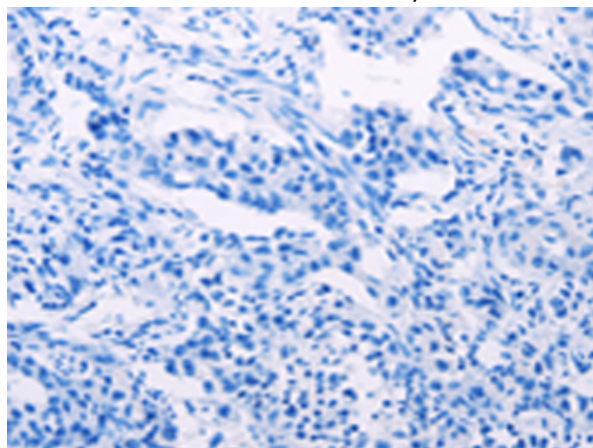
Immunohistochemistry analysis of paraffin embedded Human colon cancer tissue using 216835 (TEKT4 Antibody) at a dilution of 1/20 (Cyttoplasm).



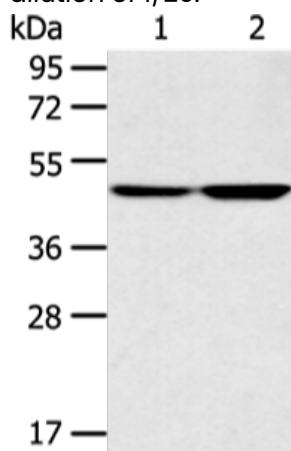
In comparison with the IHC on the left, the same paraffin-embedded Human colon cancer tissue is first treated with the fusion protein and then with 216835 (Anti-TEKT4 Antibody) at dilution 1/20.



The image on the left is immunohistochemistry of paraffin-embedded Human lung cancer tissue using 216835 (Anti-TEKT4 Antibody) at a dilution of 1/20.



In comparison with the IHC on the left, the same paraffin-embedded Human lung cancer tissue is first treated with fusion protein and then with D221332 (Anti-TEKT4 Antibody) at dilution 1/20.



Gel: 8% SDS-PAGE, Lysate: 40  $\mu$ g;  
 Lane 1-2: A172 and 293T cell;  
 Primary antibody: 216835 (TEKT4 Antibody) at dilution 1/200;  
 Secondary antibody: Goat anti rabbit IgG at 1/8000 dilution;  
 Exposure time: 1 minute



# Product Description

Pioneering GTPase and Oncogene Product Development since 2010

---