

TEKT1 RABBIT PAB

Cat.#: S210635

Product Name: Anti-TEKT1 Rabbit Polyclonal Antibody

Synonyms:

UNIPROT ID: Q969V4 (Gene Accession - BC014599)

Background: This gene product belongs to the tektin family of proteins. Tektins comprise a family of filament-forming proteins that are coassembled with tubulins to form ciliary and flagellar microtubules. This gene is predominantly expressed in the testis and in mouse, tektin 1 mRNA was localized to the spermatocytes and round spermatids in the seminiferous tubules, indicating that it may play a role in spermatogenesis.

Immunogen: Fusion protein of human TEKT1

Applications: ELISA, WB, IHC

Recommended Dilutions: IHC: 50-200;WB: 500-2000;ELISA: 2000-5000

Host Species: Rabbit

Clonality: Rabbit Polyclonal

Isotype: Immunogen-specific rabbit IgG

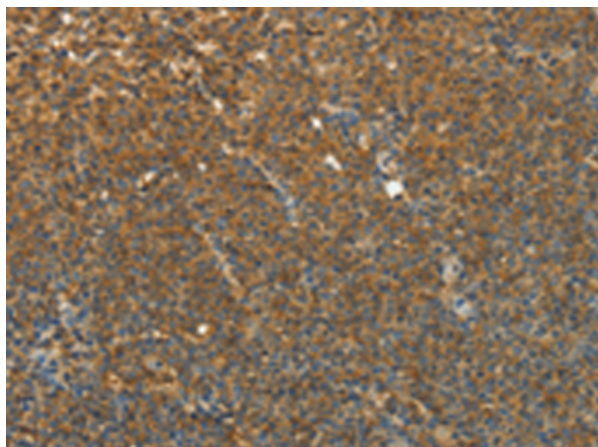
Purification: Antigen affinity purification

Species Reactivity: Human, Mouse, Rat

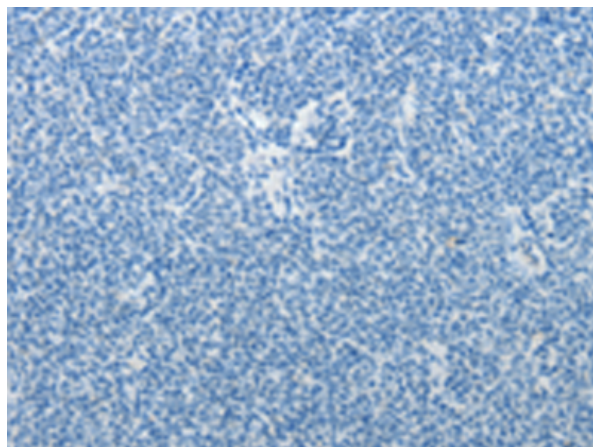
Constituents: PBS (without Mg²⁺ and Ca²⁺), pH 7.4, 150 mM NaCl, 0.05% Sodium Azide and 40% glycerol

Research Areas: Signal Transduction

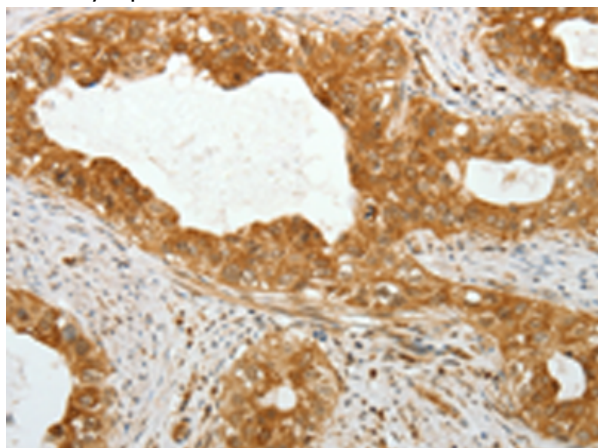
Storage & Shipping: Store at -20°C. Avoid repeated freezing and thawing



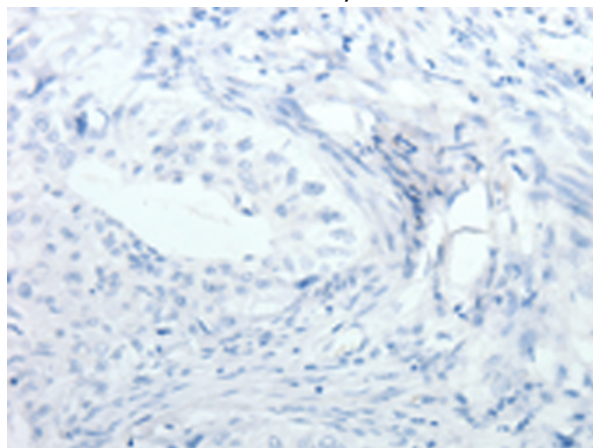
Immunohistochemistry analysis of paraffin embedded Human lymphoma tissue using 210635(TEKTI Antibody) at a dilution of 1/30(Cytoplasm).



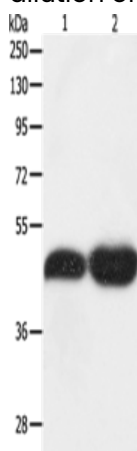
In comparison with the IHC on the left, the same paraffin-embedded Human lymphoma tissue is first treated with the fusion protein and then with 210635(Anti-TEKTI Antibody) at dilution 1/30.



The image on the left is immunohistochemistry of paraffin-embedded Human cervical cancer tissue using 210635(Anti-TEKTI Antibody) at a dilution of 1/30.



In comparison with the IHC on the left, the same paraffin-embedded Human cervical cancer tissue is first treated with fusion protein and then with D121334(Anti-TEKTI Antibody) at dilution 1/30.



Gel: 10%SDS-PAGE, Lysate: 40 µg;
 Lane 1-2: NIH/3T3 cells, Lncap cells;
 Primary antibody: 210635(TEKTI Antibody) at dilution 1/500;
 Secondary antibody: Goat anti rabbit IgG at 1/8000 dilution;
 Exposure time: 10 minutes



Product Description

Pioneering GTPase and Oncogene Product Development since 2010
