

## TEDC1 RABBIT PAB

**Cat.#:** S218387

**Product Name:** Anti-TEDC1 Rabbit Polyclonal Antibody

**Synonyms:** C14orf80

**UNIPROT ID:** Q86SX3 (Gene Accession - BC016028 )

**Background:** Acts as a positive regulator of ciliary hedgehog signaling. Required for centriole stability (By similarity). May play a role in counteracting perturbation of actin filaments, such as after treatment with the actin depolymerizing microbial metabolite Chivosazole F (PubMed:28796488).

**Immunogen:** Fusion protein of human TEDC1

**Applications:** ELISA, WB, IHC

**Recommended Dilutions:** IHC: 25-100;WB: 200-1000;ELISA: 5000-10000

**Host Species:** Rabbit

**Clonality:** Rabbit Polyclonal

**Isotype:** Immunogen-specific rabbit IgG

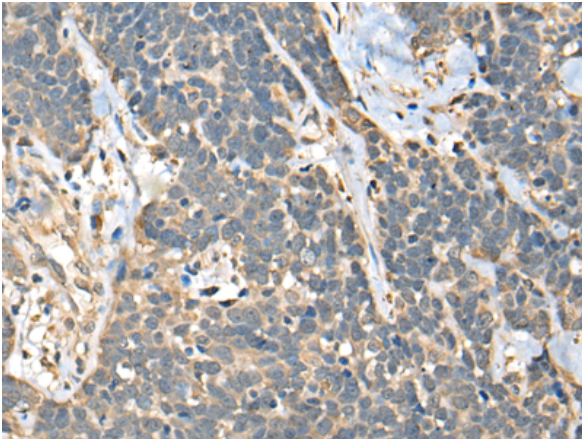
**Purification:** Antigen affinity purification

**Species Reactivity:** Human

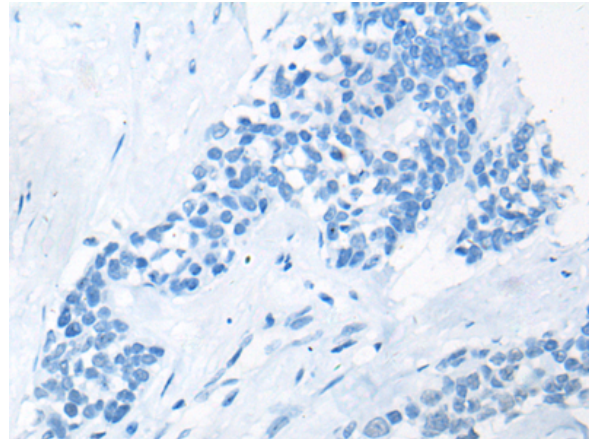
**Constituents:** PBS (without Mg<sup>2+</sup> and Ca<sup>2+</sup>), pH 7.4, 150 mM NaCl, 0.05% Sodium Azide and 40% glycerol

**Research Areas:** Cell Biology

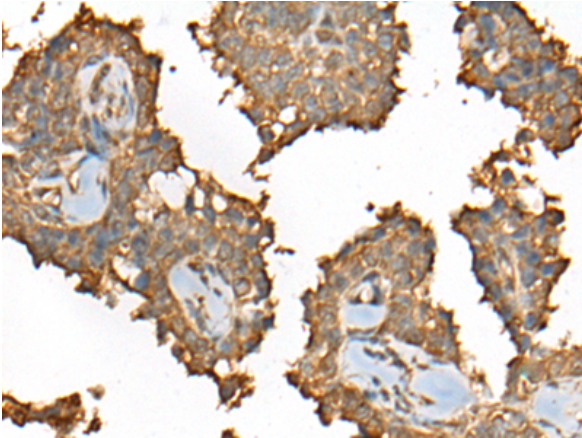
**Storage & Shipping:** Store at -20°C. Avoid repeated freezing and thawing



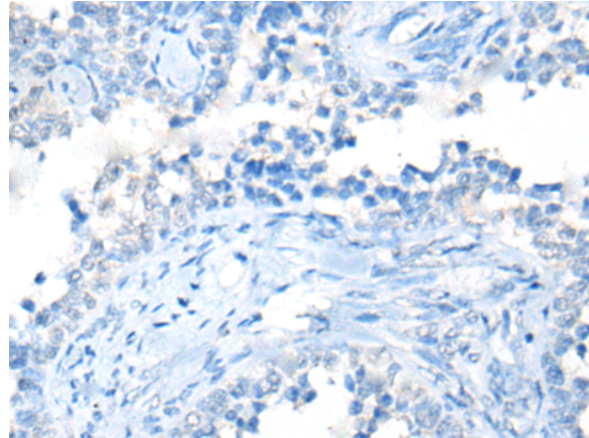
Immunohistochemistry analysis of paraffin embedded Human thyroid cancer tissue using 218387 (TEDC1 Antibody) at a dilution of 1/35 (Cytoplasm).



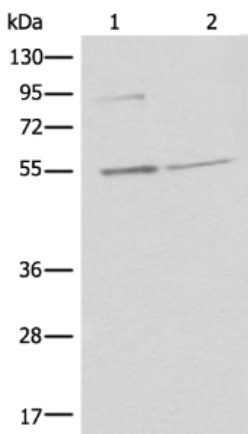
In comparison with the IHC on the left, the same paraffin-embedded Human thyroid cancer tissue is first treated with the fusion protein and then with 218387 (Anti-TEDC1 Antibody) at dilution 1/35.



The image on the left is immunohistochemistry of paraffin-embedded Human ovarian cancer tissue using 218387 (Anti-TEDC1 Antibody) at a dilution of 1/35.



In comparison with the IHC on the left, the same paraffin-embedded Human ovarian cancer tissue is first treated with fusion protein and then with D224311 (Anti-TEDC1 Antibody) at dilution 1/35.



Gel: 8% SDS-PAGE, Lysate: 40 µg;  
Lane 1-2: K562 cell and Human testis tissue lysates;  
Primary antibody: 218387 (TEDC1 Antibody) at dilution 1/300;  
Secondary antibody: Goat anti rabbit IgG at 1/8000 dilution;  
Exposure time: 5 seconds



# Product Description

Pioneering GTPase and Oncogene Product Development since 2010

---