

TCP 1 ALPHA RABBIT MAB

Cat.#: N263572

Product Name: Anti-TCP 1 alpha Rabbit Monoclonal Antibody

Synonyms: TCPI; CCT1; CCTA; T-complex protein 1 subunit alpha; TCP-1-alpha; CCT-alpha

UNIPROT ID: P17987

Background: Molecular chaperone; assists the folding of proteins upon ATP hydrolysis. As part of the BBS/CCT complex may play a role in the assembly of BBSome, a complex involved in ciliogenesis regulating transports vesicles to the cilia. Known to play a role, in vitro, in the folding of actin and tubulin.

Immunogen: A synthetic peptide of human TCPI alpha/CCTA

Applications: WB,IHC-F,IHC-P,ICC/IF,IP

Recommended Dilutions: WB: 1/500-1/1000 IHC: 1/50-1/100 IF: 1/50-1/200 IP: 1/20

Host Species: Rabbit

Clonality: Rabbit Monoclonal

Clone ID: R06-8G2

MW: Calculated MW: 60 kDa; Observed MW: 60 kDa

Isotype: IgG

Purification: Affinity Purified

Species Reactivity: Human,Hamster

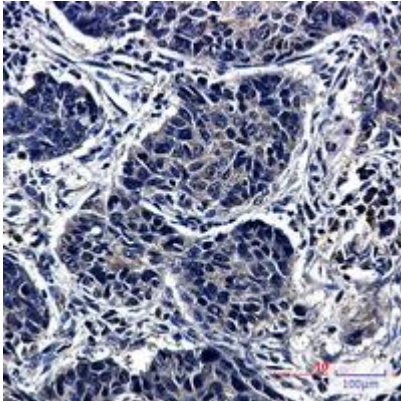
Conjugation: Unconjugated

Modification: Unmodified

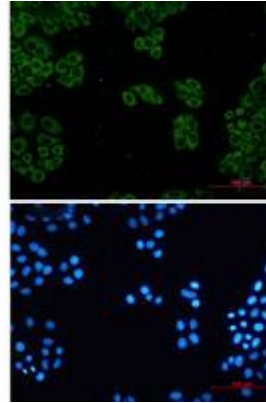
Constituents: PBS (without Mg²⁺ and Ca²⁺), pH 7.3 containing 50% glycerol, 0.5% BSA and 0.02% sodium azide

Research Areas: Signal Transduction

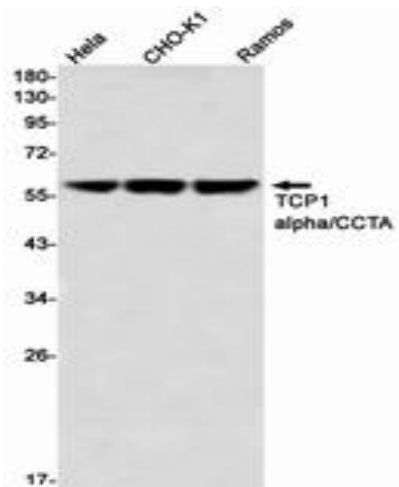
Storage & Shipping: Store at -20°C. Avoid repeated freezing and thawing



Immunohistochemistry analysis of paraffin-embedded Human lung cancer tissue using TCP1 alpha/CCTA antibody. High-pressure and temperature Sodium Citrate pH 6.0 was used for antigen retrieval.



Immunocytochemistry analysis of TCP 1 alpha (green) in HeLa using TCP 1 alpha antibody, and DAPI (blue).



Western blot analysis of TCP1 alpha/CCTA in HeLa, CHO-K1, Ramos lysates using TCP1 alpha/CCTA antibody.