

## TCF19 RABBIT PAB

**Cat.#:** S213031

**Product Name:** Anti-TCF19 Rabbit Polyclonal Antibody

**Synonyms:** SC1; TCF-19

**UNIPROT ID:** Q9Y242 (Gene Accession - BC002493 )

**Background:** This gene encodes a protein that contains a PHD-type zinc finger domain and likely functions as a transcription factor. The encoded protein plays a role proliferation and apoptosis of pancreatic beta cells. Alternative splicing results in multiple transcript variants.

**Immunogen:** Fusion protein of human TCF19

**Applications:** ELISA, IHC

**Recommended Dilutions:** IHC: 50-100; ELISA: 5000-10000

**Host Species:** Rabbit

**Clonality:** Rabbit Polyclonal

**Isotype:** Immunogen-specific rabbit IgG

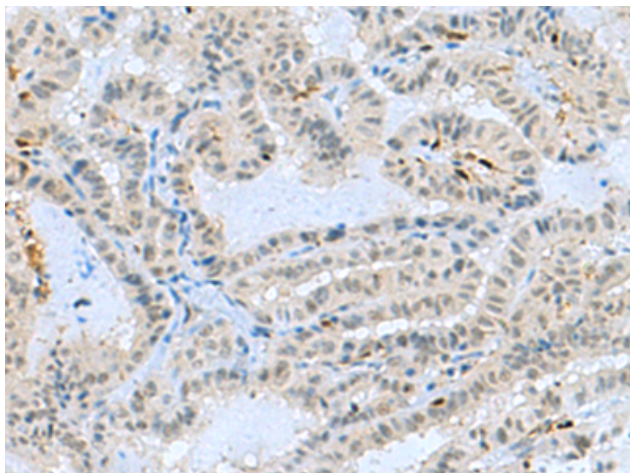
**Purification:** Antigen affinity purification

**Species Reactivity:** Human

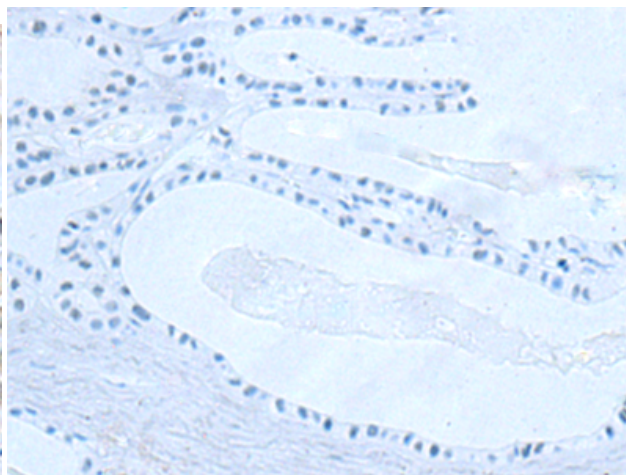
**Constituents:** PBS (without Mg<sup>2+</sup> and Ca<sup>2+</sup>), pH 7.4, 150 mM NaCl, 0.05% Sodium Azide and 40% glycerol

**Research Areas:** Epigenetics and Nuclear Signaling, Signal Transduction

**Storage & Shipping:** Store at -20°C. Avoid repeated freezing and thawing



Immunohistochemistry analysis of paraffin embedded Human thyroid cancer tissue using 213031(TCF19 Antibody) at a dilution of 1/60(Nucleus).



In comparison with the IHC on the left, the same paraffin-embedded Human thyroid cancer tissue is first treated with the fusion protein and then with 213031(Anti-TCF19 Antibody) at dilution 1/60.