

## TARBP2 RABBIT MAB

**Cat.#:** N263019

**Product Name:** Anti-TARBP2 Rabbit Monoclonal Antibody

**Synonyms:** LOQS; Prbp; tarbp2; TRBP; TRBP1; TRBP2

**UNIPROT ID:** Q15633

**Background:** Required for formation of the RNA induced silencing complex (RISC). Component of the RISC loading complex (RLC), also known as the micro-RNA (miRNA) loading complex (miRLC), which is composed of DICER1, EIF2C2/AGO2 and TARBP2.

**Immunogen:** A synthetic peptide of human TRBP

**Applications:** WB,IHC-F,IHC-P,ICC/IF,IP

**Recommended Dilutions:** WB: 1/500-1/1000 IHC: 1/50-1/100 IF: 1/50-1/200 IP: 1/20

**Host Species:** Rabbit

**Clonality:** Rabbit Monoclonal

**Clone ID:** R04-511

**MW:** Calculated MW: 39 kDa; Observed MW: 39 kDa

**Isotype:** IgG

**Purification:** Affinity Purified

**Species Reactivity:** Human,Mouse,Rat

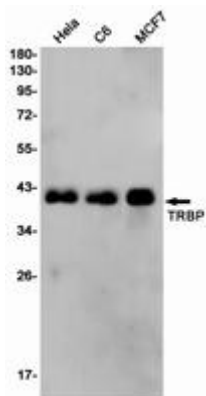
**Conjugation:** Unconjugated

**Modification:** Unmodified

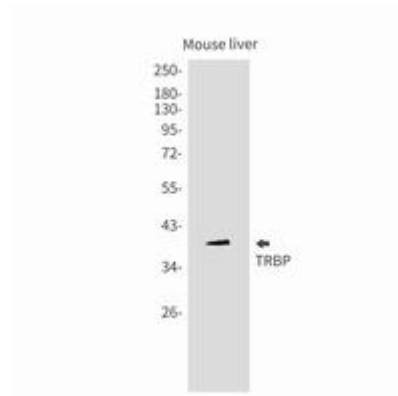
**Constituents:** PBS (without Mg<sup>2+</sup> and Ca<sup>2+</sup>), pH 7.3 containing 50% glycerol, 0.5% BSA and 0.02% sodium azide

**Research Areas:** Microbiology

**Storage & Shipping:** Store at -20°C. Avoid repeated freezing and thawing



Western blot analysis of TRBP in HeLa, C6, MCF-7 lysates using TRBP antibody.



Western blot analysis of TRBP in mouse liver lysates using TARBP2 antibody.