

## TAOK1 RABBIT MAB

**Cat.#:** N263570

**Product Name:** Anti-TAOK1 Rabbit Monoclonal Antibody

**Synonyms:** PSK2; TAO1; KFC-B; MARKK; PSK-2; hKFC-B; hTAOK1; MAP3K16

**UNIPROT ID:** Q7L7X3

**Background:** Serine/threonine-protein kinase involved in various processes such as p38/MAPK14 stress-activated MAPK cascade, DNA damage response and regulation of cytoskeleton stability.

**Immunogen:** A synthetic peptide of human TAOK1

**Applications:** WB,IP

**Recommended Dilutions:** WB: 1/500-1/1000 IP: 1/20

**Host Species:** Rabbit

**Clonality:** Rabbit Monoclonal

**Clone ID:** R06-0G0

**MW:** Calculated MW: 116 kDa; Observed MW: 116 kDa

**Isotype:** IgG

**Purification:** Affinity Purified

**Species Reactivity:** Human,Mouse,Rat

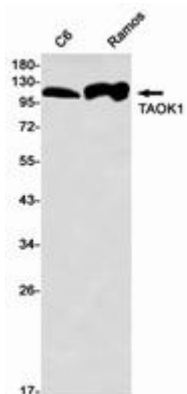
**Conjugation:** Unconjugated

**Modification:** Unmodified

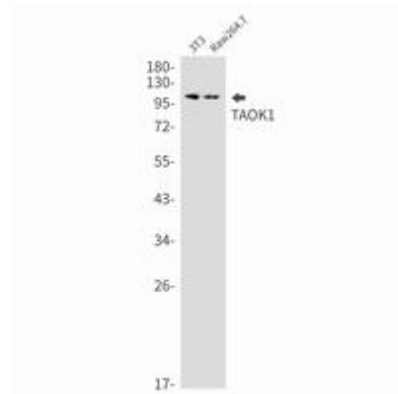
**Constituents:** PBS (without Mg<sup>2+</sup> and Ca<sup>2+</sup>), pH 7.3 containing 50% glycerol, 0.5% BSA and 0.02% sodium azide

**Research Areas:** -

**Storage & Shipping:** Store at -20°C. Avoid repeated freezing and thawing



Western blot analysis of TAOK1 in C6, Ramos lysates using TAOK1 antibody.



Western blot analysis of TAOK1 in 3T3, Raw264.7 lysates using TAOK1 antibody.