

TAF15 RABBIT MAB

Cat.#: N262965

Product Name: Anti-TAF15 Rabbit Monoclonal Antibody

Synonyms: TAF15; RBP56; TAF2N; TATA-binding protein-associated factor 2N; 68 kDa TATA-binding protein-associated factor; TAF(II)68; TAFII68; RNA-binding protein 56

UNIPROT ID: Q92804

Background: RNA and ssDNA-binding protein that may play specific roles during transcription initiation at distinct promoters. Can enter the preinitiation complex together with the RNA polymerase II (Pol II).

Immunogen: A synthetic peptide of human TAF15

Applications: WB,IHC-F,IHC-P,ICC/IF

Recommended Dilutions: WB: 1/500-1/1000 IHC: 1/50-1/100 IF: 1/50-1/200

Host Species: Rabbit

Clonality: Rabbit Monoclonal

Clone ID: R04-8A3

MW: Calculated MW: 62 kDa; Observed MW: 77 kDa

Isotype: IgG

Purification: Affinity Purified

Species Reactivity: Human,Mouse,Rat

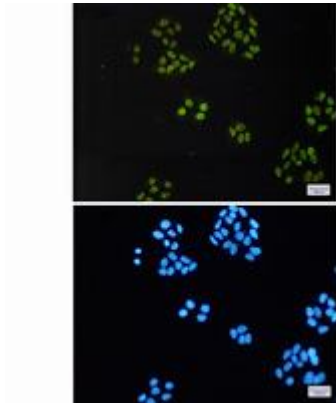
Conjugation: Unconjugated

Modification: Unmodified

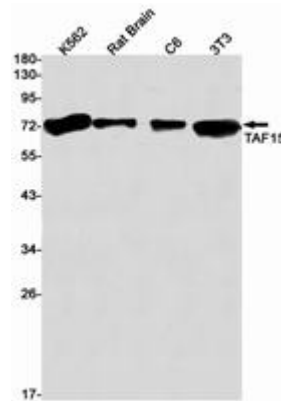
Constituents: PBS (without Mg²⁺ and Ca²⁺), pH 7.3 containing 50% glycerol, 0.5% BSA and 0.02% sodium azide

Research Areas: Epigenetics and Nuclear Signaling

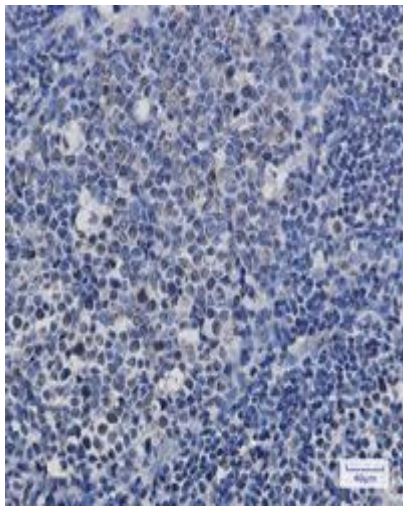
Storage & Shipping: Store at -20°C. Avoid repeated freezing and thawing



Immunocytochemistry analysis of TAF15 (green) in HeLa using TAF15 antibody, and DAPI (blue)



Western blot analysis of TAF15 in K562, rat Brain, C6, 3T3 lysates using TAF15 antibody.



Immunohistochemistry analysis of paraffin-embedded Human tonsil using TAF15 antibody. High-pressure and temperature Sodium Citrate pH 6.0 was used for antigen retrieval.