

TACSTD2 RABBIT PAB

Cat.#: N225470

Product Name: Anti-TACSTD2 Rabbit pAb

Synonyms: TACSTD2; GA733-1; MIS1; TROP2; Tumor-associated calcium signal transducer 2; Cell surface glycoprotein Trop-2; Membrane component chromosome 1 surface marker 1; Pancreatic carcinoma marker protein GA733-1

UNIPROT ID: P09758

Background: This intronless gene encodes a carcinoma-associated antigen. This antigen is a cell surface receptor that transduces calcium signals. Mutations of this gene have been associated with gelatinous drop-like corneal dystrophy.

Immunogen: The antiserum was produced against synthesized peptide derived from human TACD2. AA range:131-180

Applications: WB,IHC-P,ELISA

Recommended Dilutions: WB: 1/500-1/1000 IHC: 1/50-1/100 ELISA: 1/10000

Host Species: Rabbit

Clonality: Rabbit Polyclonal

Clone ID: -

MW: Calculated MW: 36 kDa; Observed MW: 36 kDa

Isotype: IgG

Purification: Affinity Chromatography

Species Reactivity: Human,Mouse,Rat

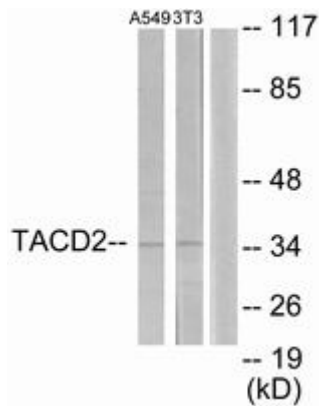
Conjugation: Unconjugated

Modification: Unmodified

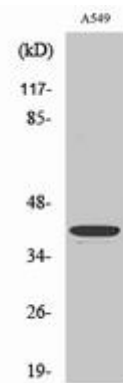
Constituents: PBS (without Mg²⁺ and Ca²⁺), pH 7.3 containing 50% glycerol, 0.5% BSA and 0.02% sodium azide

Research Areas: Signal Transduction

Storage & Shipping: Store at -20°C. Avoid repeated freezing and thawing



Western blot analysis of TACSTD2 in A549 and NIH/3T3 lysates using TACD2 antibody. The lane on the right is blocked with the synthesized peptide.



Western blot analysis of TACSTD2 in various lysates using TACSTD2 antibody.