

## SYT5 RABBIT PAB

**Cat.#:** S216808

**Product Name:** Anti-SYT5 Rabbit Polyclonal Antibody

**Synonyms:**

**UNIPROT ID:** O00445 (Gene Accession - BC046157 )

**Background:** Synaptotagmins, such as SYT5, are a family of type III membrane proteins characterized by cytoplasmic repeats related to protein kinase C (see MIM 176960) regulatory (C2) domains, which are thought to bind calcium. Synaptotagmins may act both as negative regulators of vesicle fusion, allowing fusion in the presence of calcium, and as calcium receptors or sensor molecules.

**Immunogen:** Fusion protein of human SYT5

**Applications:** ELISA, WB, IHC

**Recommended Dilutions:** IHC: 50-200;WB: 500-2000;ELISA: 5000-10000

**Host Species:** Rabbit

**Clonality:** Rabbit Polyclonal

**Isotype:** Immunogen-specific rabbit IgG

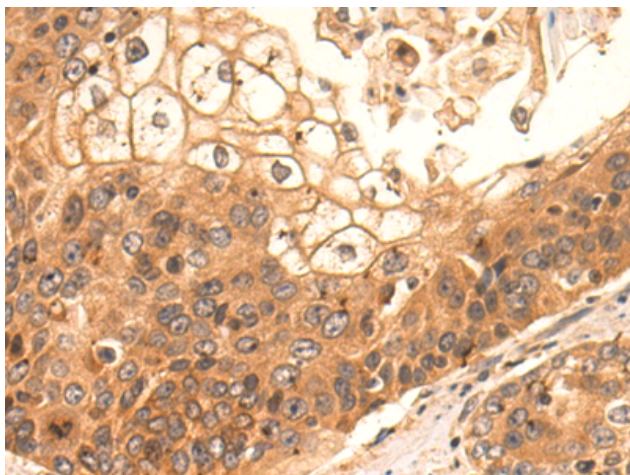
**Purification:** Antigen affinity purification

**Species Reactivity:** Human, Mouse, Rat

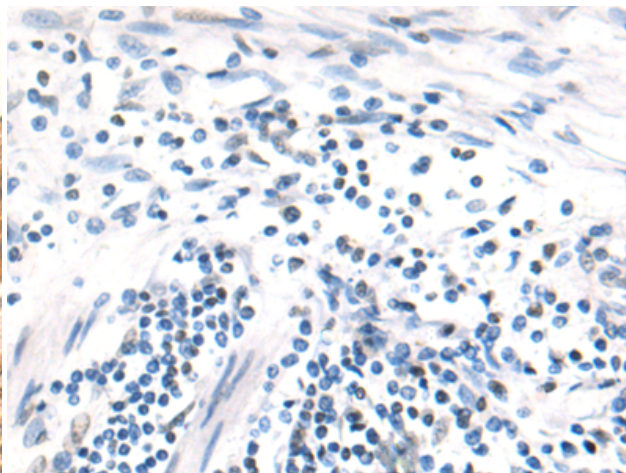
**Constituents:** PBS (without Mg<sup>2+</sup> and Ca<sup>2+</sup>), pH 7.4, 150 mM NaCl, 0.05% Sodium Azide and 40% glycerol

**Research Areas:** Cancer, Metabolism, Neuroscience

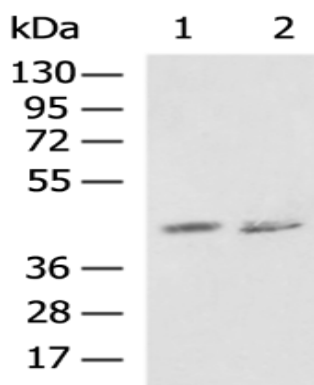
**Storage & Shipping:** Store at -20°C. Avoid repeated freezing and thawing



Immunohistochemistry analysis of paraffin embedded Human esophagus cancer tissue using 216808(SYT5 Antibody) at a dilution of 1/60(Cytoplasm).



In comparison with the IHC on the left, the same paraffin-embedded Human esophagus cancer tissue is first treated with the fusion protein and then with 216808(Anti-SYT5 Antibody) at dilution 1/60.



Gel: 8%SDS-PAGE, Lysate: 40 µg;  
 Lane 1-2: Human cerebrum tissue, PC3 cell lysates;  
 Primary antibody: 216808(SYT5 Antibody) at dilution 1/800;  
 Secondary antibody: HRP-conjugated Goat anti rabbit IgG at 1/5000 dilution;  
 Exposure time: 2 minutes