

## SYT16 RABBIT PAB

**Cat.#:** S221324

**Product Name:** Anti-SYT16 Rabbit Polyclonal Antibody

**Synonyms:** yt14r; SYT14L; syt14r; Strep14; CHR14SYT

**UNIPROT ID:** Q17RD7 (Gene Accession - NP\_114120 )

**Background:** May be involved in the trafficking and exocytosis of secretory vesicles in non-neuronal tissues. Is Ca<sup>2+</sup>-independent.

**Immunogen:** Synthetic peptide of human SYT16

**Applications:** ELISA, IHC

**Recommended Dilutions:** IHC: 25-100; ELISA: 5000-10000

**Host Species:** Rabbit

**Clonality:** Rabbit Polyclonal

**Isotype:** Immunogen-specific rabbit IgG

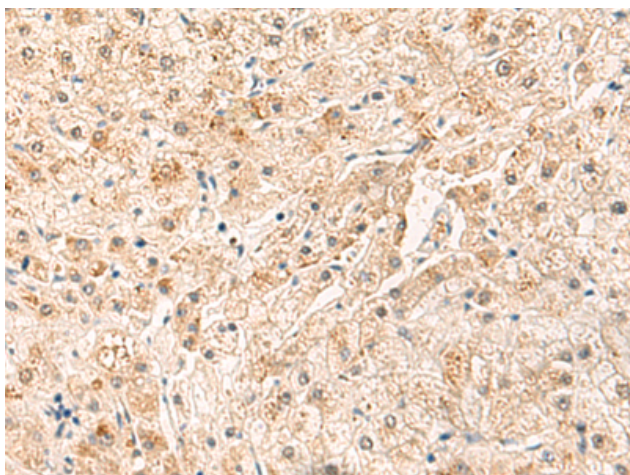
**Purification:** Antigen affinity purification

**Species Reactivity:** Human, Mouse

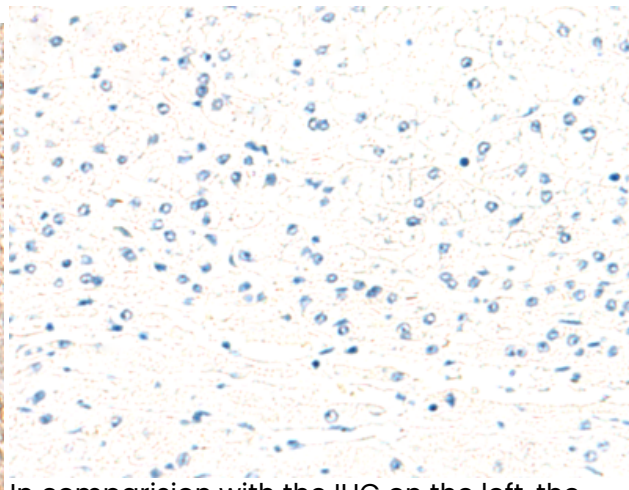
**Constituents:** PBS (without Mg<sup>2+</sup> and Ca<sup>2+</sup>), pH 7.4, 150 mM NaCl, 0.05% Sodium Azide and 40% glycerol

**Research Areas:** Neuroscience

**Storage & Shipping:** Store at -20°C. Avoid repeated freezing and thawing



Immunohistochemistry analysis of paraffin embedded Human liver cancer tissue using 221324(SYT16 Antibody) at a dilution of 1/30(Cytoplasm).



In comparison with the IHC on the left, the same paraffin-embedded Human liver cancer tissue is first treated with the synthetic peptide and then with 221324(Anti-SYT16 Antibody) at dilution 1/30.