

SYNTROPHIN ALPHA 1 RABBIT MAB

Cat.#: N262962

Product Name: Anti-Syntrophin alpha 1 Rabbit Monoclonal Antibody

Synonyms: Alpha 1 syntrophin; LQT12; SNT1; Snta1; Syntrophin 1; TACIP1

UNIPROT ID: Q13424

Background: Adapter protein that binds to and probably organizes the subcellular localization of a variety of membrane proteins. May link various receptors to the actin cytoskeleton and the extracellular matrix via the dystrophin glycoprotein complex.

Immunogen: A synthetic peptide of human Syntrophin alpha 1

Applications: WB,IHC-F,IHC-P,ICC/IF

Recommended Dilutions: WB: 1/500-1/1000 IHC: 1/50-1/100 IF: 1/50-1/200

Host Species: Rabbit

Clonality: Rabbit Monoclonal

Clone ID: R03-4E7

MW: Calculated MW: 54 kDa; Observed MW: 54 kDa

Isotype: IgG

Purification: Affinity Purified

Species Reactivity: Human

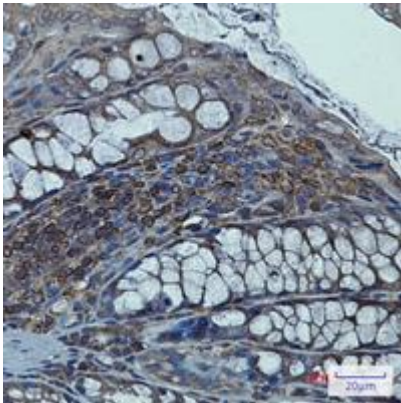
Conjugation: Unconjugated

Modification: Unmodified

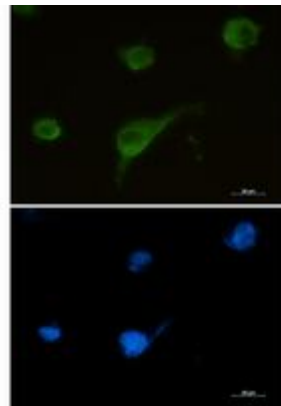
Constituents: PBS (without Mg²⁺ and Ca²⁺), pH 7.3 containing 50% glycerol, 0.5% BSA and 0.02% sodium azide

Research Areas: Signal Transduction

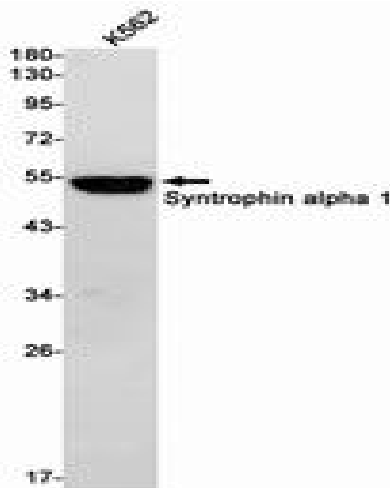
Storage & Shipping: Store at -20°C. Avoid repeated freezing and thawing



Immunohistochemistry analysis of paraffin-embedded mouse colon using Syntrophin alpha 1 antibody. High-pressure and temperature Sodium Citrate pH 6.0 was used for antigen retrieval.



Immunocytochemistry analysis of U87-MG using Syntrophin alpha 1 antibody, and DAPI (blue).



Western blot analysis of Syntrophin alpha 1 in K562 lysates using Syntrophin alpha 1 antibody